



CIPRIANI

HOMOOD
MADE IN ITALY

OUTDOOR COLLECTION



CIPRIANI è una collezione completa di tessuti da outdoor con 90 tra varianti e colori, realizzata con filati acrilici tinti in pasta. CIPRIANI ha una garanzia di resistenza al colore che viene infatti estesa ad un periodo di 5 anni.

La collezione racchiude al suo interno tessuti come Sunup, Setting, Twilight e Openair, con colorazioni pastello studiate per creare ambienti rilassanti e piacevoli, ma anche varianti con colori sgargianti come la tela Break e il morbissimo velluto Ambience.

CIPRIANI è la collezione ideale per creare mobili imbottiti da outdoor con differenti mood, soddisfacendo le richieste dei clienti che in questo settore stanno diventando sempre più esigenti.

Garantito per 5 anni alla normale esposizione solare, agli agenti atmosferici e ai micro-organismi. La garanzia non copre i danni da azioni meccaniche o atti dolosi.

CIPRIANI is a full collection of fabrics for outdoor uses that offers 90 options and colours, made with batch-dyed acrylic yarns. CIPRIANI is covered by a colour fastness warranty that has been extended to 5 years.

The collection includes fabrics such as Sunup, Setting, Twilight and Openair, with pastel colours conceived to create relaxing and pleasant environments but also offers flashy colour options such as Break and the super soft Ambience velvet.

CIPRIANI is the perfect collection to create outdoor upholstered furniture with different moods, thus answering to the needs of the ever-demanding customers in the industry.

Guaranteed for 5 years at normal sun exposure, atmospheric agents and micro-organisms. Warranty does not cover damage by mechanical actions or malicious actions.

Ambience *cat. F*



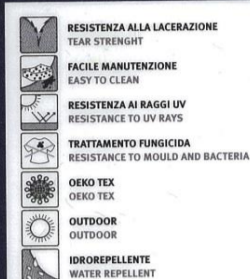
CARATTERISTICHE TECNICHE TECHNICAL DETAILS	UNITÀ UNIT	NORMA TEST METHOD	VALORI LIMIT VALUE
Peso Weight	g/m ²	-	500 _{±1,2%}
Altezza Width	cm	-	140 _{±1,2%}
Composizione Composition	-	-	99% outdoor acrylic fiber - solution dyed - 10% PES
Pilling Pilling	-	UNI EN ISO 12945-2	5
Resistenza all'abrasione Abrasion resistance	cicli / cycles	UNI EN ISO 12947-2	60.000
Solidità colori alla luce Colour fastness to light	blue scale	EN ISO 105-B04	7-8
Solidità colori allo sfregamento a secco Colour fastness to dry rubbing	-	UNI EN ISO 105-X12	5
Solidità colori allo sfregamento a umido Colour fastness to wet rubbing	-	UNI EN ISO 105-X12	5

Openair *cat. D*



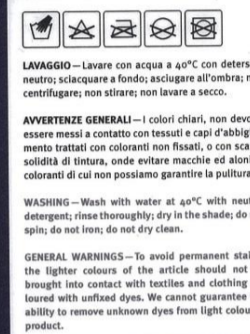
CARATTERISTICHE TECNICHE TECHNICAL DETAILS	UNITÀ UNIT	NORMA TEST METHOD	VALORI LIMIT VALUE
Peso Weight	g/m ²	-	340 _{±1,2%}
Altezza Width	cm	-	140 _{±1,2%}
Composizione Composition	-	-	100% outdoor acrylic fiber - solution dyed
Solidità colori alla luce Colour fastness to light (Xenotest)	blue scale	UNI EN ISO 105-B04	7-8
Resistenza alla trazione ORDITO Tensile strength WARP	N	UNI EN ISO 13934-1	1800
Resistenza alla trazione TRAMA Tensile strength WEFT	N	UNI EN ISO 13934-1	1250

Break *cat. C*



CARATTERISTICHE TECNICHE TECHNICAL DETAILS	UNITÀ UNIT	NORMA TEST METHOD	VALORI LIMIT VALUE
Peso Weight	g/m ²	-	260 _{±1,2%}
Altezza Width	cm	-	140 _{±1,2%}
Composizione Composition	-	-	100% outdoor acrylic fiber - solution dyed
Solidità colori alla luce Colour fastness to light (Xenotest)	blue scale	UNI EN ISO 105-B04	7-8
Resistenza alla trazione ORDITO Tensile strength WARP	N	UNI EN ISO 13934-1	1180
Resistenza alla trazione TRAMA Tensile strength WEFT	N	UNI EN ISO 13934-1	686

Setting, Sunup, Twilight *cat. D*

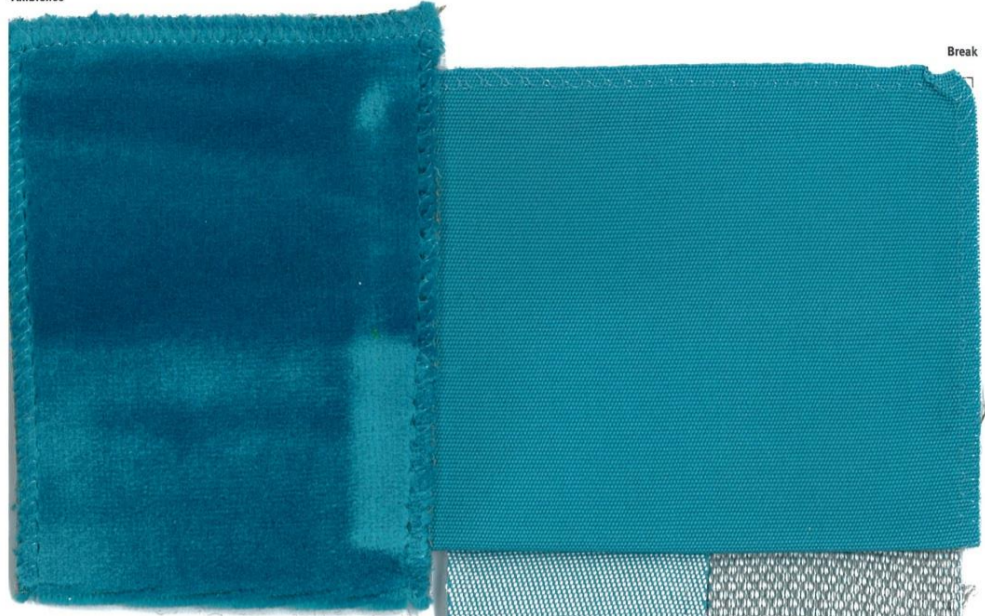


CARATTERISTICHE TECNICHE TECHNICAL DETAILS	UNITÀ UNIT	NORMA TEST METHOD	VALORI LIMIT VALUE
Peso Weight	g/m ²	-	410 _{±1,2%}
Altezza Width	cm	-	140 _{±1,2%}
Composizione Composition	-	-	100% outdoor acrylic fiber - solution dyed
Solidità colori alla luce Colour fastness to light (Xenotest)	blue scale	UNI EN ISO 105-B04	7-8
Resistenza alla trazione ORDITO Tensile strength WARP	N	UNI EN ISO 13934-1	2200
Resistenza alla trazione TRAMA Tensile strength WEFT	N	UNI EN ISO 13934-1	1300

Campione gratuito di modico valore non destinato alla vendita, esente IVA punto D - Art. 2 DPR 26.10.1972 n°633. Esente DDT punto 6 - Art. 4 DPR 06.10.1978 n°627.

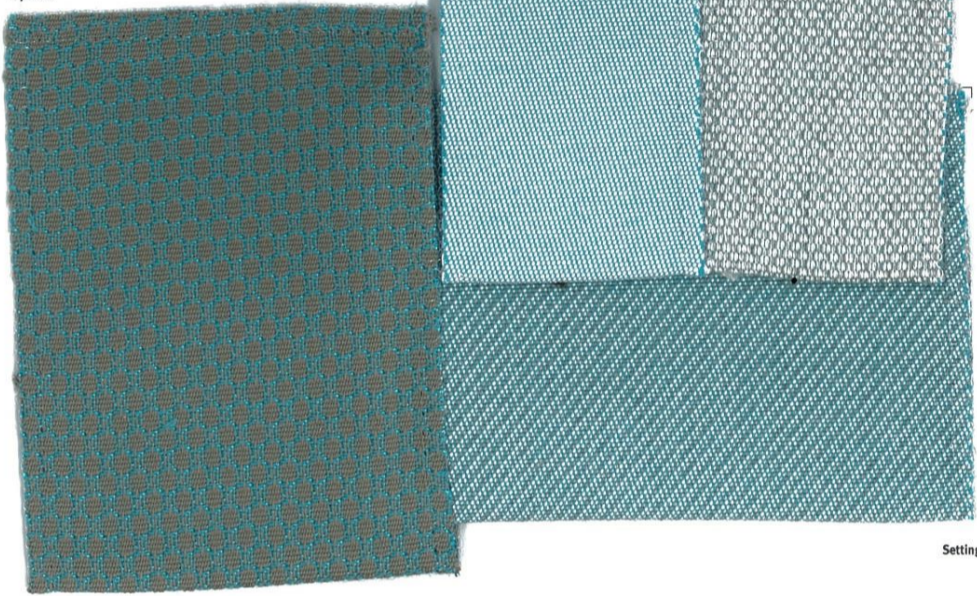
Questi valori sono dati a titolo indicativo ed in buona fede e non possono essere considerati in alcun caso vincolanti. L'impiego del prodotto deve essere valutato in base a ciò che si deve realizzare. Non si risponde del suo utilizzo per impieghi impropri. Sono ammesse leggere differenze di colori tra tutti i lotti. The communicated data correspond to average values communicated in good faith, but they cannot be considered as a contract document. The product use has to be considered in term of what has to be realized. The product cannot be held up responsible when it is improperly used. Slight colour differences among several lots are admitted.

Ambience

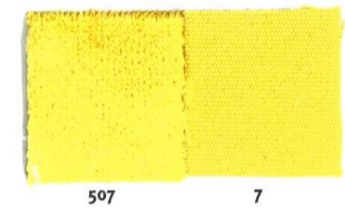
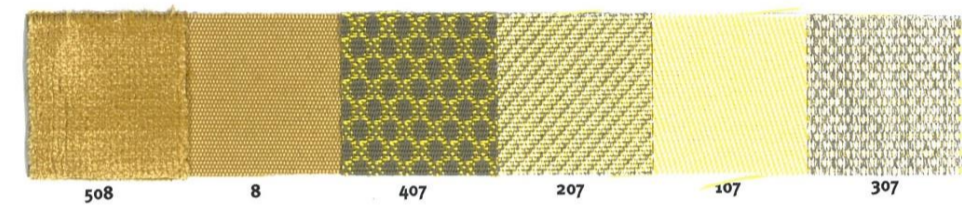
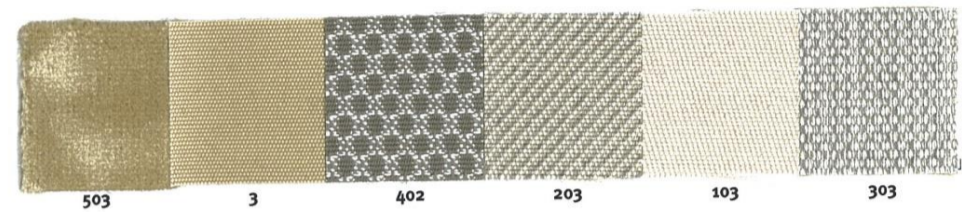
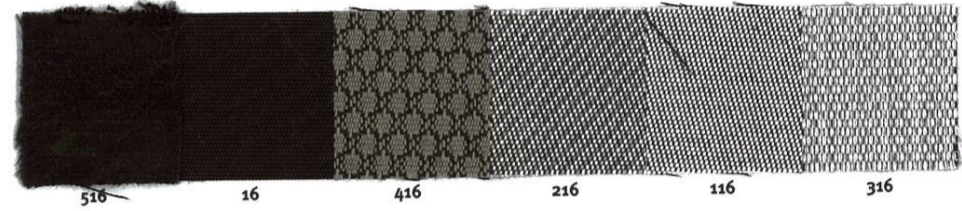
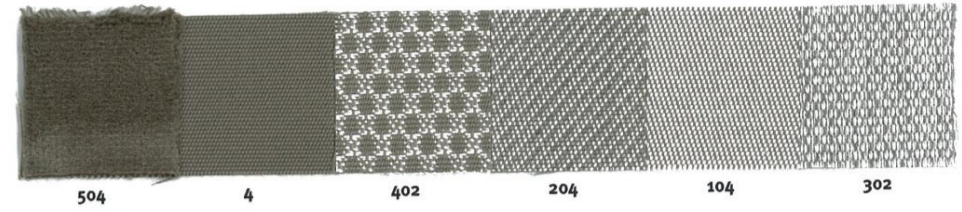
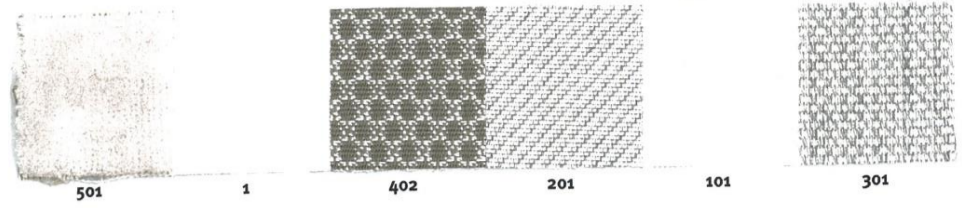


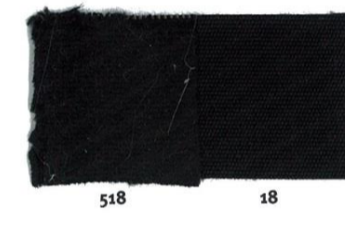
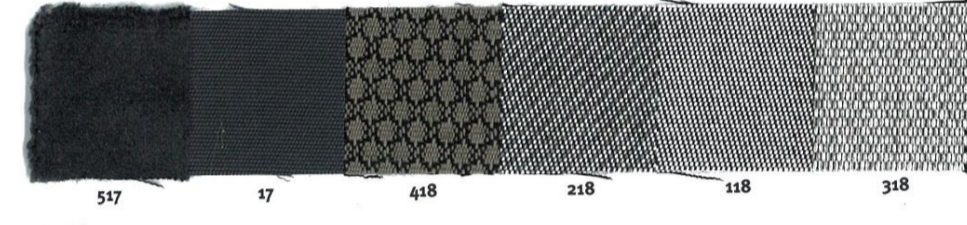
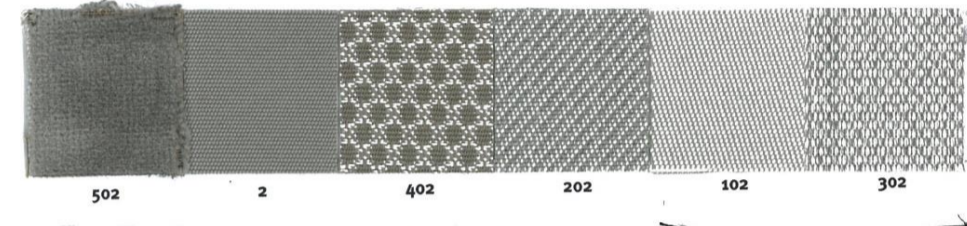
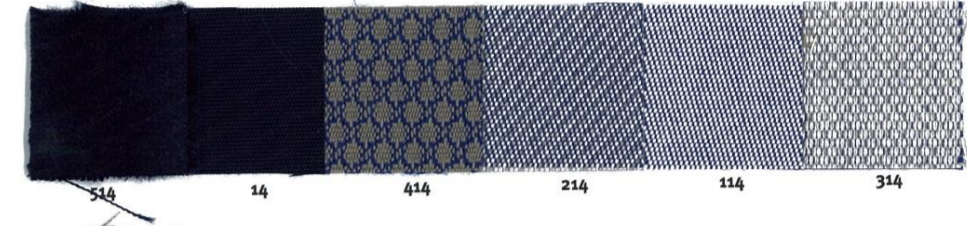
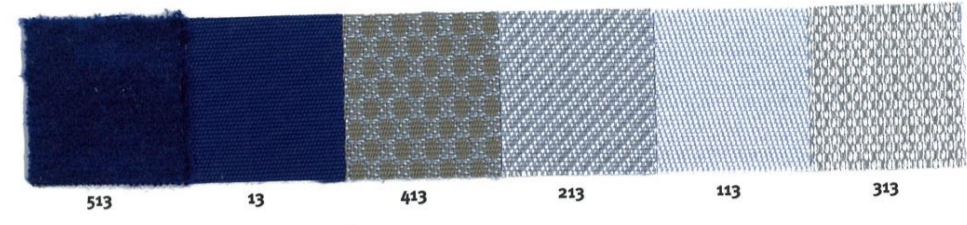
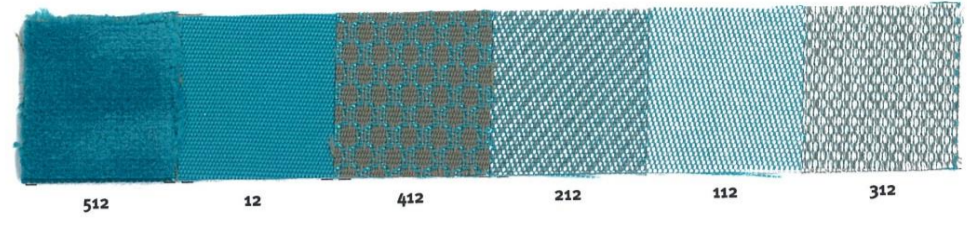
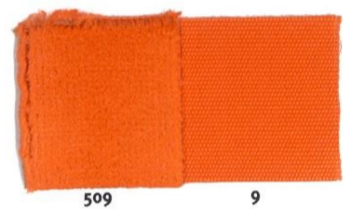
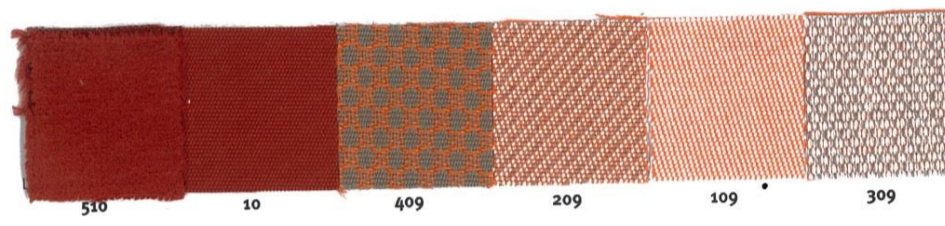
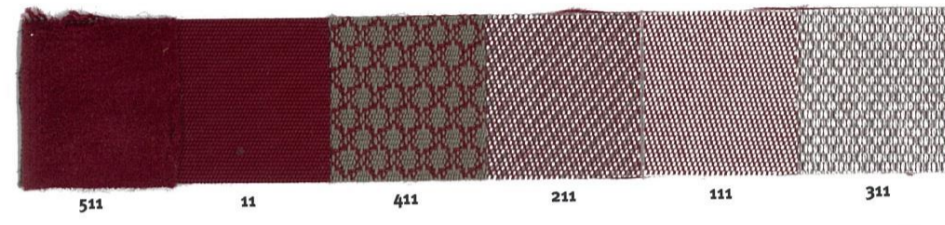
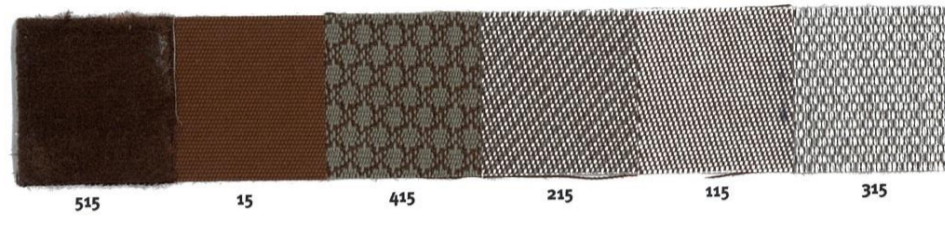
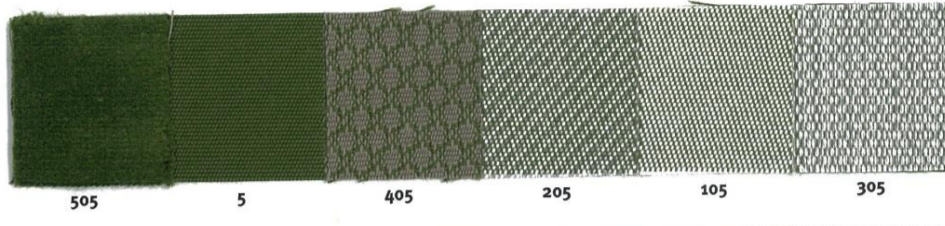
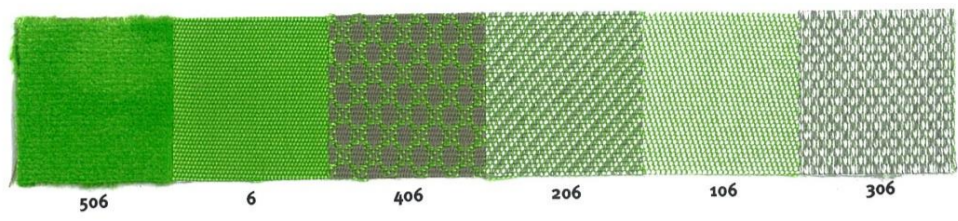
Break

Openair



Setting







Via Valdera P. 144/C
56038 Ponsacco (PI) - ITALY
Phone +39 0587 731 307
Fax +39 0587 733 448

info@ciprianihomood.com
www.ciprianihomood.com

Partner of
CIAC