

STOFFE UND LEDER TESSUTI E PELLI FABRICS AND LEATHERS

Setzen Sie Akzente in Ihrem Wohnbereich - stimmen Sie Stoffe und Oberflächen auf Ihren Geschmack, auf Ihre Stimmung, auf Ihre Anforderungen ab. Mit dieser ausgewählten Stoffkollektion präsentiert Ihnen SELVA TIMELESS die derzeit aktuellsten Bezugstoffe, in zahlreichen Farbstellungen und Dessins. Die Stoffe werden weltweit von namhaften Webereien nach international gültigen Qualitätskriterien hergestellt.

Die Entwürfe stammen von anerkannten Designern.

Trasformate casa vostra in un ambiente di carattere con tessuti e finiture che rispecchino il vostro gusto e siano in linea con le vostre esigenze. Con questa ricercata Collezione Tessuti, SELVA TIMELESS presenta tante nuove stoffe, disponibili in tanti colori e fantasie. Tessuti e pelli vengono realizzati da laboratori di fama internazionale, apprezzati per la loro produzione di altissima qualità, frutto della collaborazione con affermati e famosi designer.

Accentuate your home - let your selection of fabrics and surfaces reflect your taste, your mood, your needs. With this select collection of fabrics, SELVA TIMELESS offers you the most up-to-date upholstery materials in a wide range of colours and patterns. The fabrics are produced throughout the world by renowned weaving mills according to international standards of quality.

The designs are the work of internationally recognized designers.

Hier finden Sie alle Stoffe und Leder von SELVA TIMELESS nach Kategorie geordnet, mit allen wichtigen Informationen über Zusammensetzung, Stoffbreite, Martindale, Rapport, sowie wichtige Pflegehinweise.

Di seguito trovate tutti i tessuti e le pelli di SELVA TIMELESS ordinati per categoria, con tutte le informazioni più importanti sulla composizione, altezza, martindale, rapporto e anche i consigli per la cura e pulizia.

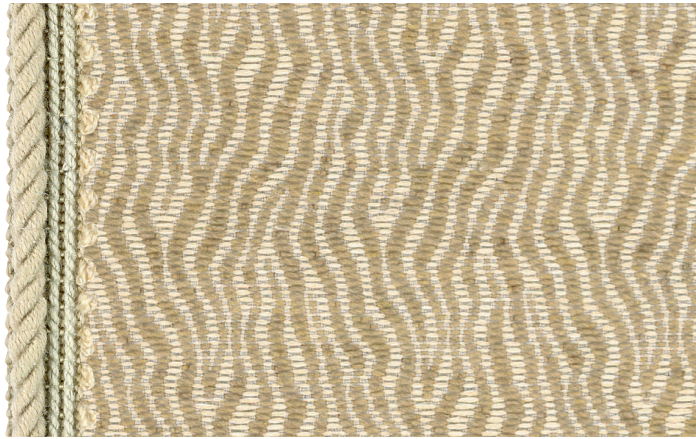
This is where you will find all of the fabrics and leathers from SELVA TIMELESS arranged by category, with all of the important information about composition, fabric width, Martindale rating, rapport, and important instructions for care.

SUMMARY

Category 2	Category 3	Category 4	Category 5	Category 7
Alto Adige	Baldovino	Wesley	Amalfi	Linea
Altona	Balthazar		Avatar	Sequoia
Voyager	Bartolo		Siena	
	Bergè		Spagna	
	Chrono		Tristano	
	Darwin			
	Feel			
	Lux			
	Milos			
	Phiaba			
	Smack			

FABRIC TYPE

A1	Unifarben	Tinta Unita	Plain - Coloured
A2	Velours	Velluto	Velvet
A3	Leder	Pelle	Leather
A4	Kunstleder	Similpelle	Synthetic Leather
A5	Schmale Streifen	Righe Strette	Narrow Strips
A6	Breite Streifen	Righe Larghe	Wide Strips
A7	Kleines Dessin	Disegno Piccolo	Small Pattern
A8	Grosses Dessin	Disegno Grande	Large Pattern
A9	Velours Schmale Streifen	Velluto Righe Strette	Velour Narrow Strips
A10	Velours Breite Streifen	Velluto Righe Larghe	Velour Wide Strips
A11	Velours Kleines Dessin	Velluto Disegno Piccolo	Velour Small Pattern
A12	Velours Grosses Dessin	Velluto Disegno Grande	Velour Large Pattern



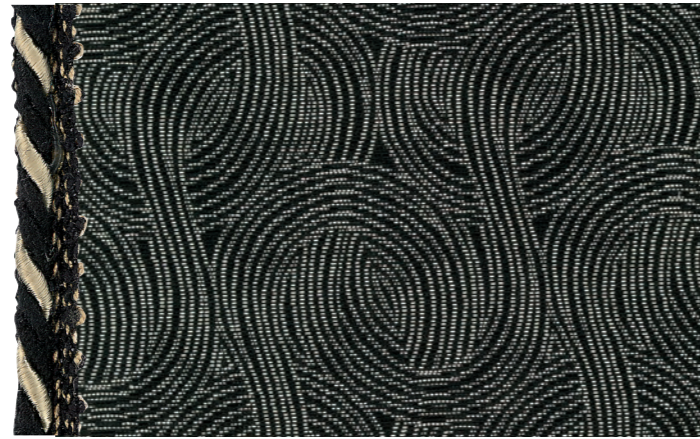
CAT.2 - FABRIC TYPE: A7 Maßstab/Scala/Scale: 1:1 cm

**ALTO ADIGE
SAND | S2068**

66% Polyester/Polyester/Poliestere
34% Baumwolle/Cotton/Cotone

 Martindale: 18.000
140

Pflege/Care/Manutenzione:

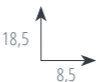


CAT.2 - FABRIC TYPE: A7 Maßstab/Scala/Scale: 1:2 cm

**ALTONA
BLACK | S2070**

66% Polyester/Polyester/Poliestere
34% Baumwolle/Cotton/Cotone

 Martindale: 18.000
140

Rapport/Repeat/Rapporto 

Pflege/Care/Manutenzione:




CAT.3 - FABRIC TYPE: A6 Maßstab/Scala/Scale: 1:1,7 cm

**BALTHAZAR
BLUE | S3A33**

53% Flame Retardant/Flame Retardant/Flame Retardant
47% Polyester/Polyester/Poliestere

 Martindale: 25.000 
140

Rapport/Repeat/Rapporto 

Pflege/Care/Manutenzione:




CAT.3 - FABRIC TYPE: A6 Maßstab/Scala/Scale: 1:1 cm

**BALTHAZAR
RED | S3A34**

53% Flame Retardant/Flame Retardant/Flame Retardant
47% Polyester/Polyester/Poliestere

 Martindale: 25.000 
140

Rapport/Repeat/Rapporto 

Pflege/Care/Manutenzione:



CAT.2 - FABRIC TYPE: A7 Maßstab/Scala/Scale: 1:2 cm

**ALTONA
SAND | S2069**

66% Polyester/Polyester/Poliestere
34% Baumwolle/Cotton/Cotone

 Martindale: 18.000
140

Rapport/Repeat/Rapporto 

Pflege/Care/Manutenzione:



CAT.2 - FABRIC TYPE: A7 Maßstab/Scala/Scale: 1:2 cm

**VOYAGER
GRAY | S2087**

53% Viskose/Viscose/Viscosa
47% Polyester/Polyester/Poliestere

 Martindale: 16.000
140

Pflege/Care/Manutenzione:




CAT.3 - FABRIC TYPE: A6 Maßstab/Scala/Scale: 1:1 cm

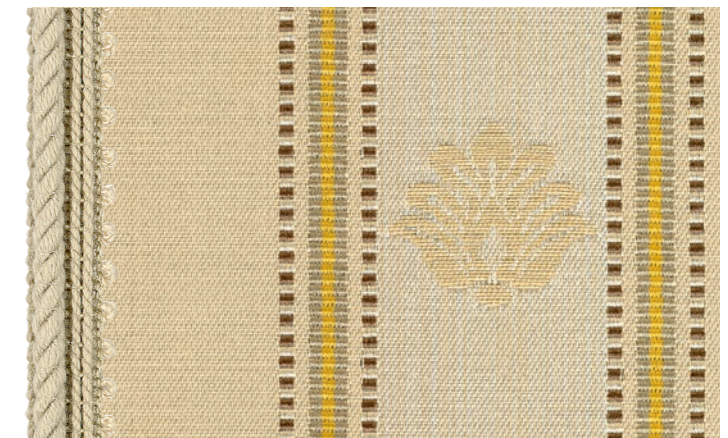
**BALTHAZAR
GOLD | S3A35**

53% Flame Retardant/Flame Retardant/Flame Retardant
47% Polyester/Polyester/Poliestere

 Martindale: 25.000 
140

Rapport/Repeat/Rapporto 

Pflege/Care/Manutenzione:



CAT.3 - FABRIC TYPE: A6 Maßstab/Scala/Scale: 1:1 cm

**BALTHAZAR
IVORY | S3A36**

53% Flame Retardant/Flame Retardant/Flame Retardant
47% Polyester/Polyester/Poliestere

 Martindale: 25.000 
140

Rapport/Repeat/Rapporto 

Pflege/Care/Manutenzione:

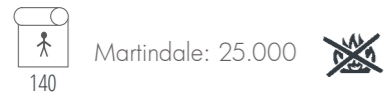




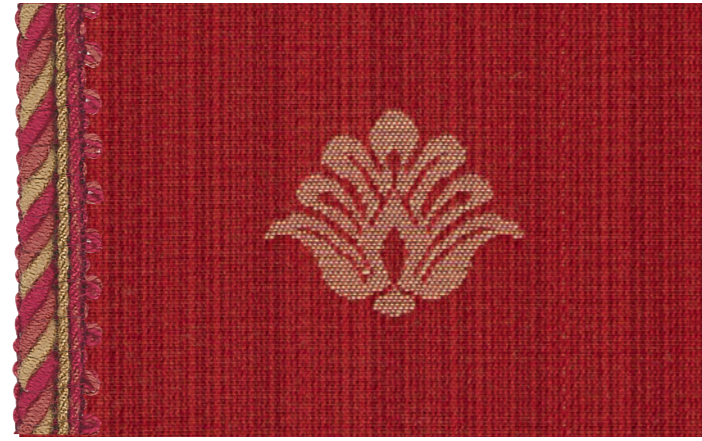
CAT.3 - FABRIC TYPE: A7 Maßstab/Scala/Scale: 1:1,7 cm

BALDOVINO
BLUE | S3A37

53% Flame Retardand/Flame Retardand/Flame Retardand
47% Polyester/Polyester/Poliestere



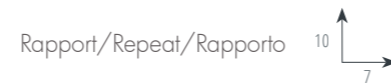
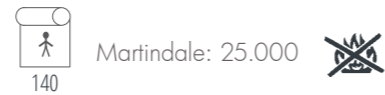
Pflege/Care/Manutenzione:



CAT.3 - FABRIC TYPE: A7 Maßstab/Scala/Scale: 1:1 cm

BALDOVINO
RED | S3A38

53% Flame Retardand/Flame Retardand/Flame Retardand
47% Polyester/Polyester/Poliestere



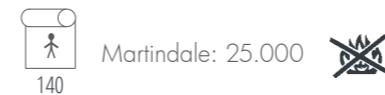
Pflege/Care/Manutenzione:



CAT.3 - FABRIC TYPE: A7 Maßstab/Scala/Scale: 1:1,7 cm

BARTOLO
BLUE | S3A41

53% Flame Retardand/Flame Retardand/Flame Retardand
47% Polyester/Polyester/Poliestere



Pflege/Care/Manutenzione:



CAT.3 - FABRIC TYPE: A7 Maßstab/Scala/Scale: 1:1 cm

BARTOLO
RED | S3A42

53% Flame Retardand/Flame Retardand/Flame Retardand
47% Polyester/Polyester/Poliestere



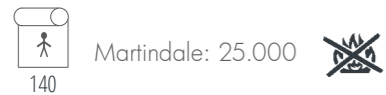
Pflege/Care/Manutenzione:



CAT.3 - FABRIC TYPE: A7 Maßstab/Scala/Scale: 1:1 cm

BALDOVINO
GOLD | S3A39

53% Flame Retardand/Flame Retardand/Flame Retardand
47% Polyester/Polyester/Poliestere



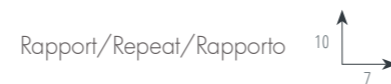
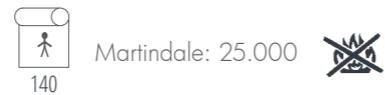
Pflege/Care/Manutenzione:



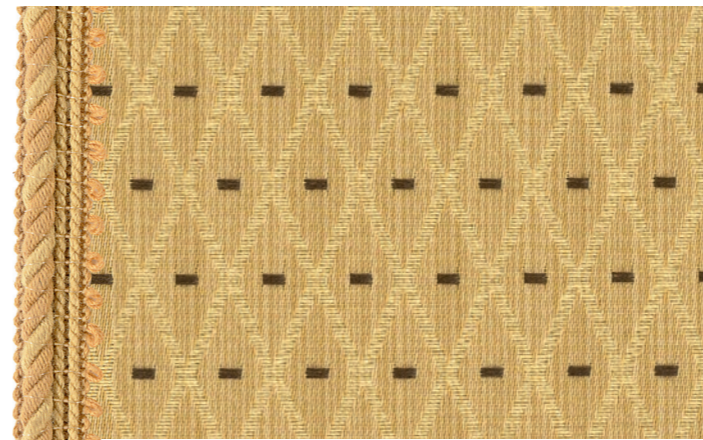
CAT.3 - FABRIC TYPE: A7 Maßstab/Scala/Scale: 1:1 cm

BALDOVINO
IVORY | S3A40

53% Flame Retardand/Flame Retardand/Flame Retardand
47% Polyester/Polyester/Poliestere



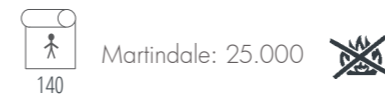
Pflege/Care/Manutenzione:



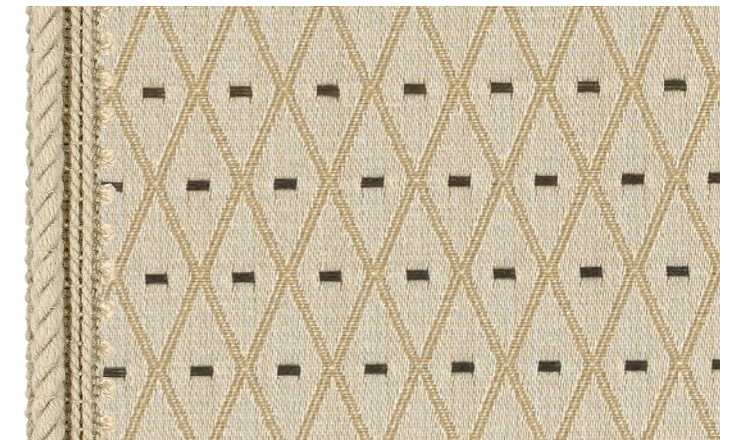
CAT.3 - FABRIC TYPE: A7 Maßstab/Scala/Scale: 1:1 cm

BARTOLO
GOLD | S3A43

53% Flame Retardand/Flame Retardand/Flame Retardand
47% Polyester/Polyester/Poliestere



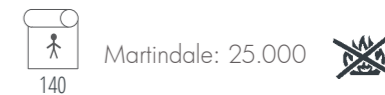
Pflege/Care/Manutenzione:



CAT.3 - FABRIC TYPE: A7 Maßstab/Scala/Scale: 1:1 cm

BARTOLO
IVORY | S3A44

53% Flame Retardand/Flame Retardand/Flame Retardand
47% Polyester/Polyester/Poliestere



Pflege/Care/Manutenzione:





CAT.3 - FABRIC TYPE: A8 Maßstab/Scala/Scale: 1:5 cm

CHRONO

BLUE | S3A45

55% Modacryl/Modacrylic/Modacrilica
45% Polyester/Polyester/Poliestere

Martindale: 18.000

Rapport/Repeat/Rapporto

Pflege/Care/Manutenzione:



CAT.3 - FABRIC TYPE: A8 Maßstab/Scala/Scale: 1:1 cm

CHRONO

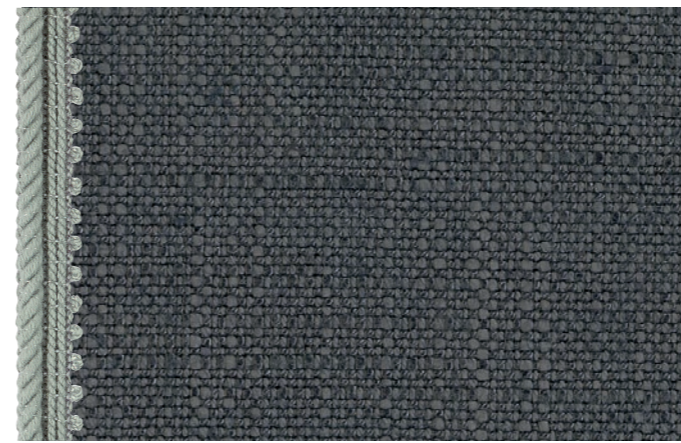
RED | S3A46

55% Modacryl/Modacrylic/Modacrilica
45% Polyester/Polyester/Poliestere

Martindale: 18.000

Rapport/Repeat/Rapporto

Pflege/Care/Manutenzione:



CAT.3 - FABRIC TYPE: A1 Maßstab/Scala/Scale: 1:1 cm

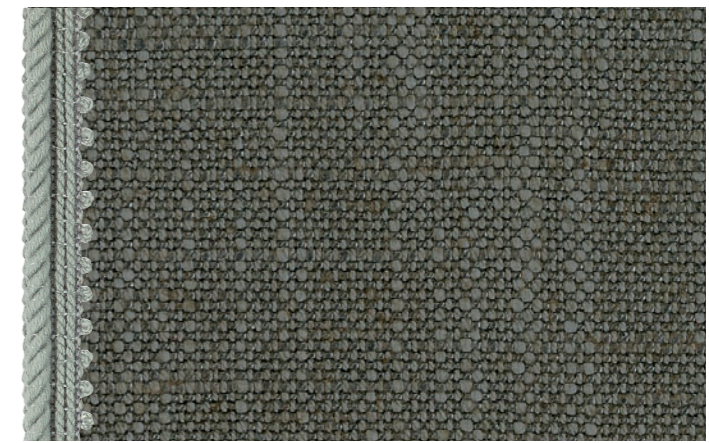
DARWIN

SMOKE BLUE | S3A57

58% Viskose/Viscose/Viscosa
31% Baumwolle/Cotton/Cotone
11% Leinen/Linen/Lino

Martindale: 35.000

Pflege/Care/Manutenzione:



CAT.3 - FABRIC TYPE: A1 Maßstab/Scala/Scale: 1:1 cm

DARWIN

STONE | S3A58

58% Viskose/Viscose/Viscosa
31% Baumwolle/Cotton/Cotone
11% Leinen/Linen/Lino

Martindale: 35.000

Pflege/Care/Manutenzione:



CAT.3 - FABRIC TYPE: A8 Maßstab/Scala/Scale: 1:1 cm

CHRONO

IVORY | S3A47

55% Modacryl/Modacrylic/Modacrilica
45% Polyester/Polyester/Poliestere

Martindale: 18.000

Rapport/Repeat/Rapporto

Pflege/Care/Manutenzione:



CAT.3 - FABRIC TYPE: A1 Maßstab/Scala/Scale: 1:1 cm

DARWIN

MUD | S3A56

58% Viskose/Viscose/Viscosa
31% Baumwolle/Cotton/Cotone
11% Leinen/Linen/Lino

Martindale: 35.000

Pflege/Care/Manutenzione:



CAT.3 - FABRIC TYPE: A1 Maßstab/Scala/Scale: 1:1 cm

DARWIN

SAND | S3A59

58% Viskose/Viscose/Viscosa
31% Baumwolle/Cotton/Cotone
11% Leinen/Linen/Lino

Martindale: 35.000

Pflege/Care/Manutenzione:



CAT.3 - FABRIC TYPE: A1 Maßstab/Scala/Scale: 1:1 cm

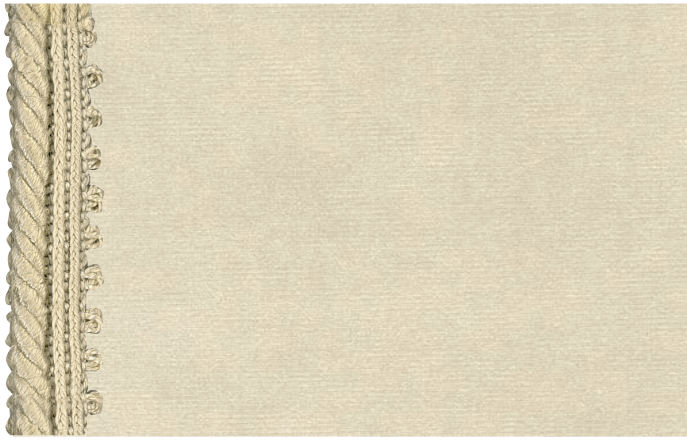
DARWIN

PEARL | S3A60

58% Viskose/Viscose/Viscosa
31% Baumwolle/Cotton/Cotone
11% Leinen/Linen/Lino

Martindale: 35.000

Pflege/Care/Manutenzione:



CAT.3 - FABRIC TYPE: A2 Maßstab/Scala/Scale: 1:1 cm

LUX

PEARL | S3A61

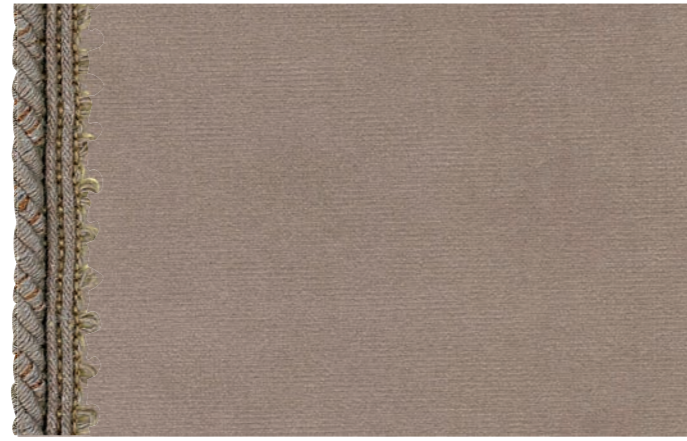
100% Polyester/Polyester/Poliestere



Martindale: 100.000

138/140

Pflege/Care/Manutenzione:



CAT.3 - FABRIC TYPE: A2 Maßstab/Scala/Scale: 1:1 cm

LUX

DOVE | S3A62

100% Polyester/Polyester/Poliestere



Martindale: 100.000

138/140

Pflege/Care/Manutenzione:



CAT.3 - FABRIC TYPE: A2 Maßstab/Scala/Scale: 1:1 cm

LUX

GREEN | S3A65

100% Polyester/Polyester/Poliestere



Martindale: 100.000

138/140

Pflege/Care/Manutenzione:



CAT.3 - FABRIC TYPE: A2 Maßstab/Scala/Scale: 1:1 cm

LUX

OLIVE | S3A66

100% Polyester/Polyester/Poliestere



Martindale: 100.000

138/140

Pflege/Care/Manutenzione:



CAT.3 - FABRIC TYPE: A2 Maßstab/Scala/Scale: 1:1 cm

LUX

DATE | S3A63

100% Polyester/Polyester/Poliestere



Martindale: 100.000

138/140

Pflege/Care/Manutenzione:



CAT.3 - FABRIC TYPE: A2 Maßstab/Scala/Scale: 1:1 cm

LUX

CHOCOLATE | S3A64

100% Polyester/Polyester/Poliestere



Martindale: 100.000

138/140

Pflege/Care/Manutenzione:



CAT.3 - FABRIC TYPE: A2 Maßstab/Scala/Scale: 1:1 cm

LUX

AVIO | S3A67

100% Polyester/Polyester/Poliestere



Martindale: 100.000

138/140

Pflege/Care/Manutenzione:



CAT.3 - FABRIC TYPE: A2 Maßstab/Scala/Scale: 1:1 cm

LUX

EMERALD | S3A68

100% Polyester/Polyester/Poliestere

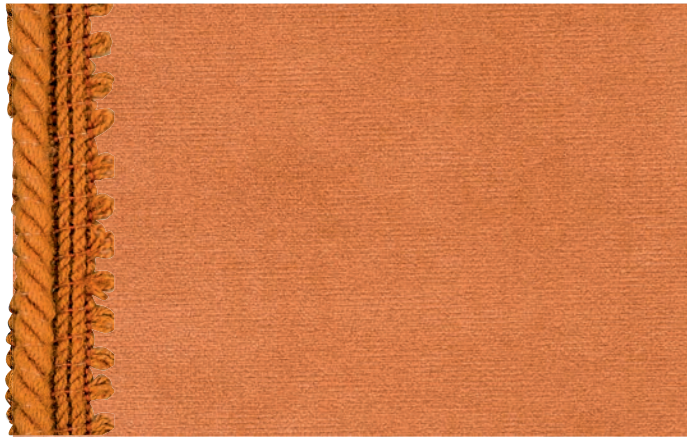


Martindale: 100.000

138/140

Pflege/Care/Manutenzione:





CAT.3 - FABRIC TYPE: A2 Maßstab/Scala/Scale: 1:1 cm

LUX

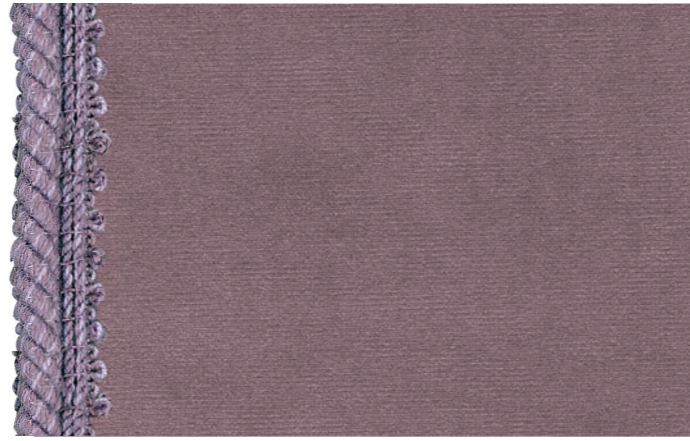
OCRA | S3A69

100% Polyester/Polyester/Poliestere



Martindale: 100.000
138/140

Pflege/Care/Manutenzione:



CAT.3 - FABRIC TYPE: A2 Maßstab/Scala/Scale: 1:1 cm

LUX

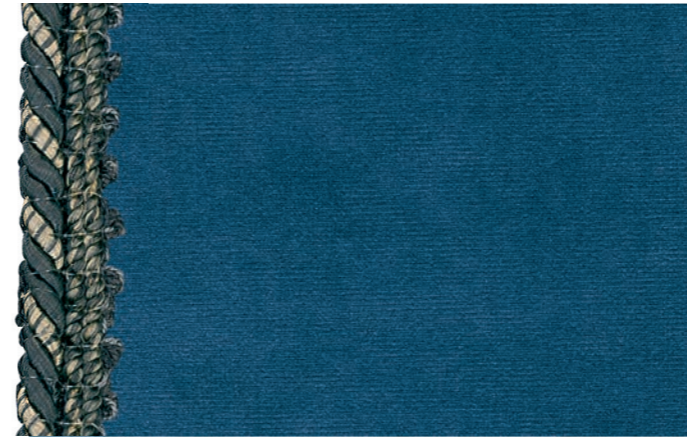
LILLA | S3A70

100% Polyester/Polyester/Poliestere



Martindale: 100.000
138/140

Pflege/Care/Manutenzione:



CAT.3 - FABRIC TYPE: A2 Maßstab/Scala/Scale: 1:1 cm

LUX

AZUL | S3A73

100% Polyester/Polyester/Poliestere



Martindale: 100.000
138/140

Pflege/Care/Manutenzione:



CAT.3 - FABRIC TYPE: A7 Maßstab/Scala/Scale: 1:1 cm

MILOS

PEARL | S3A74

40% Viskose/Viscose/Viscosa
31% Baumwolle/Cotton/Cotone
21% Polyester/Polyester/Poliestere
8% Leinen/Linen/Lino



Martindale: 18.000
140

Pflege/Care/Manutenzione:



CAT.3 - FABRIC TYPE: A2 Maßstab/Scala/Scale: 1:1 cm

LUX

PURPLE | S3A71

100% Polyester/Polyester/Poliestere



Martindale: 100.000
138/140

Pflege/Care/Manutenzione:



CAT.3 - FABRIC TYPE: A2 Maßstab/Scala/Scale: 1:1 cm

LUX

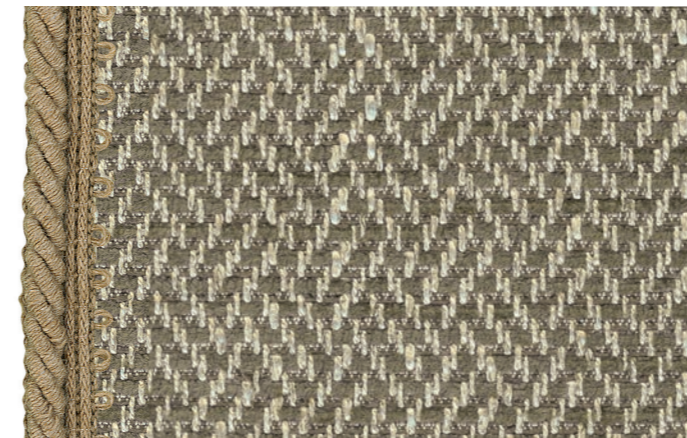
SMOKE | S3A72

100% Polyester/Polyester/Poliestere



Martindale: 100.000
138/140

Pflege/Care/Manutenzione:



CAT.3 - FABRIC TYPE: A7 Maßstab/Scala/Scale: 1:1 cm

MILOS

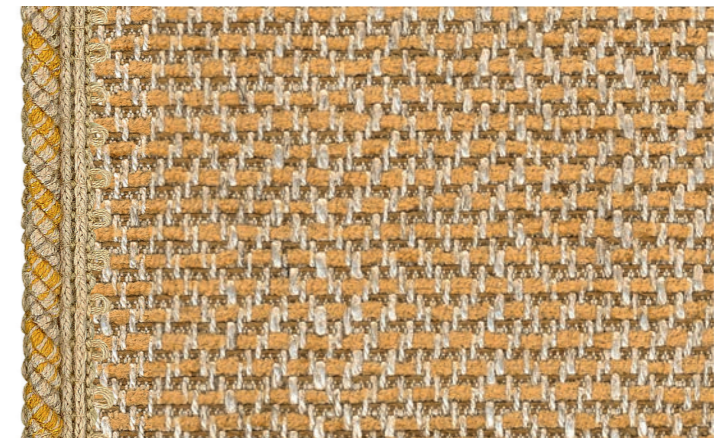
BEIGE | S3A75

40% Viskose/Viscose/Viscosa
31% Baumwolle/Cotton/Cotone
21% Polyester/Polyester/Poliestere
8% Leinen/Linen/Lino



Martindale: 18.000
140

Pflege/Care/Manutenzione:



CAT.3 - FABRIC TYPE: A7 Maßstab/Scala/Scale: 1:1 cm

MILOS

OCRA | S3A76

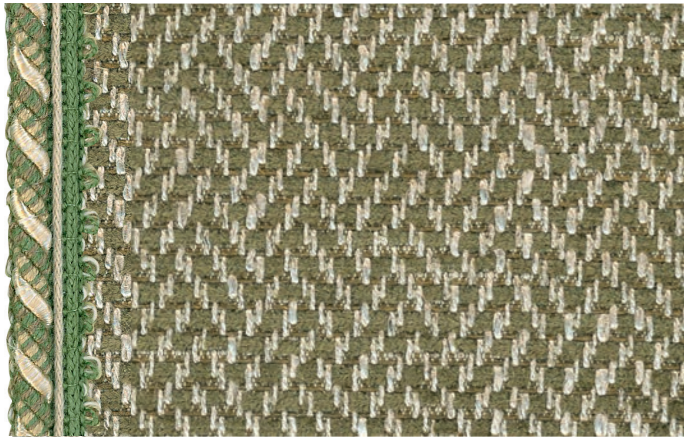
40% Viskose/Viscose/Viscosa
31% Baumwolle/Cotton/Cotone
21% Polyester/Polyester/Poliestere
8% Leinen/Linen/Lino



Martindale: 18.000
140

Pflege/Care/Manutenzione:





CAT.3 - FABRIC TYPE: A7 Maßstab/Scala/Scale: 1:1 cm

MILOS

OLIVE | S3A77

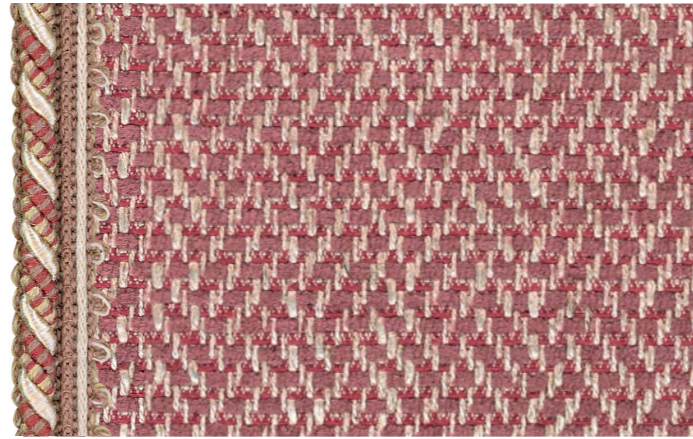
40% Viskose/Viscose/Viscosa
31% Baumwolle/Cotton/Cotone
21% Polyester/Polyester/Poliestere
8% Leinen/Linen/Lino



Martindale: 18.000

140

Pflege/Care/Manutenzione:



CAT.3 - FABRIC TYPE: A7 Maßstab/Scala/Scale: 1:1 cm

MILOS

RED | S3A78

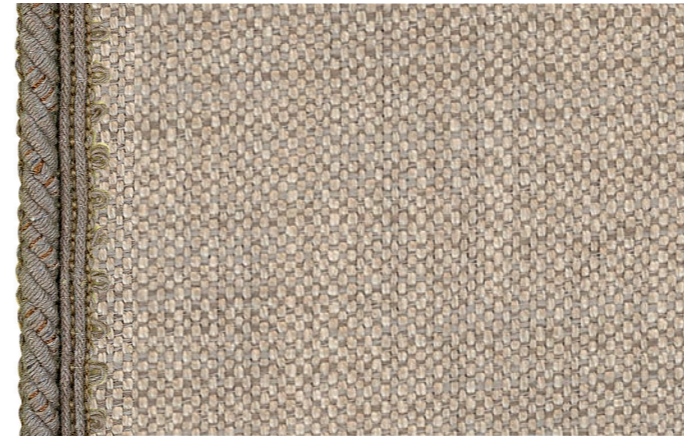
40% Viskose/Viscose/Viscosa
31% Baumwolle/Cotton/Cotone
21% Polyester/Polyester/Poliestere
8% Leinen/Linen/Lino



Martindale: 18.000

140

Pflege/Care/Manutenzione:



CAT.3 - FABRIC TYPE: A1 Maßstab/Scala/Scale: 1:1 cm

SMACK

BEIGE | S3A81

100% Polyester/Polyester/Poliestere



Martindale: 50.000

138/140

Pflege/Care/Manutenzione:



CAT.3 - FABRIC TYPE: A1 Maßstab/Scala/Scale: 1:1 cm

SMACK

DOVE | S3A82

100% Polyester/Polyester/Poliestere



Martindale: 50.000

138/140

Pflege/Care/Manutenzione:



CAT.3 - FABRIC TYPE: A7 Maßstab/Scala/Scale: 1:1 cm

MILOS

AVIO | S3A79

40% Viskose/Viscose/Viscosa
31% Baumwolle/Cotton/Cotone
21% Polyester/Polyester/Poliestere
8% Leinen/Linen/Lino



Martindale: 18.000

140

Pflege/Care/Manutenzione:



CAT.3 - FABRIC TYPE: A1 Maßstab/Scala/Scale: 1:1 cm

SMACK

SAND | S3A80

100% Polyester/Polyester/Poliestere



Martindale: 50.000

138/140

Pflege/Care/Manutenzione:



CAT.3 - FABRIC TYPE: A1 Maßstab/Scala/Scale: 1:1 cm

SMACK

NOUGAT | S3A83

100% Polyester/Polyester/Poliestere



Martindale: 50.000

138/140

Pflege/Care/Manutenzione:



CAT.3 - FABRIC TYPE: A1 Maßstab/Scala/Scale: 1:1 cm

SMACK

GRAY | S3A84

100% Polyester/Polyester/Poliestere

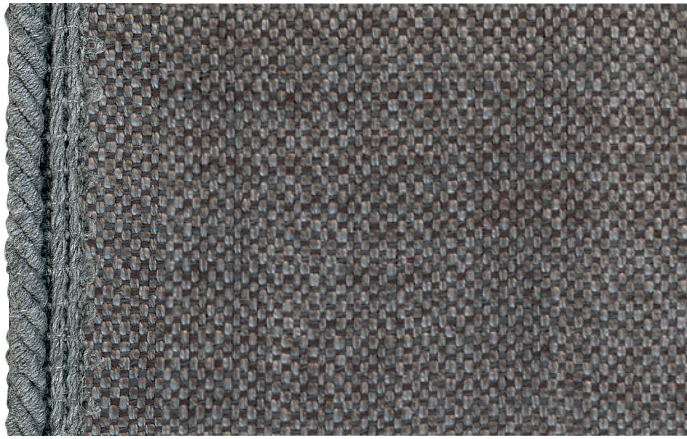


Martindale: 50.000

138/140

Pflege/Care/Manutenzione:





CAT.3 - FABRIC TYPE: A1 Maßstab/Scala/Scale: 1:1 cm

SMACK

STONE | S3A85

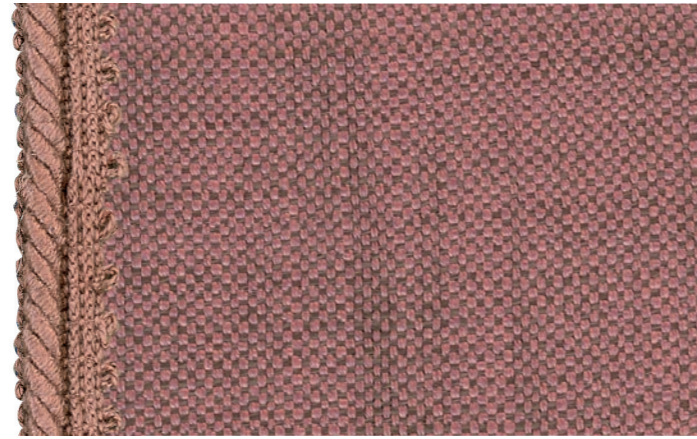
100% Polyester/Polyester/Poliestere



Martindale: 50.000

138/140

Pflege/Care/Manutenzione:



CAT.3 - FABRIC TYPE: A1 Maßstab/Scala/Scale: 1:1 cm

SMACK

LILLA | S3A86

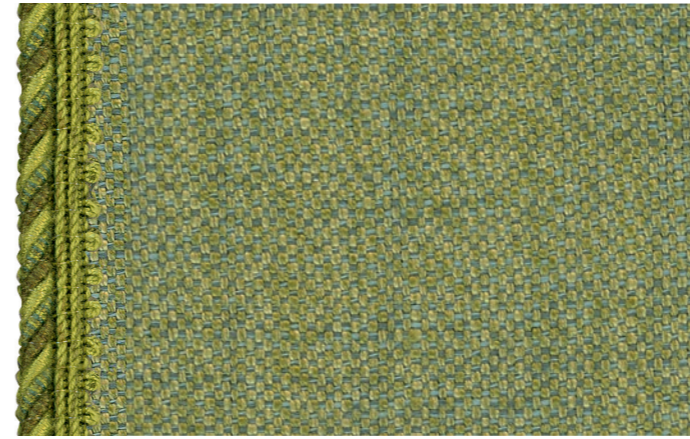
100% Polyester/Polyester/Poliestere



Martindale: 50.000

138/140

Pflege/Care/Manutenzione:



CAT.3 - FABRIC TYPE: A1 Maßstab/Scala/Scale: 1:1 cm

SMACK

GREEN | S3A89

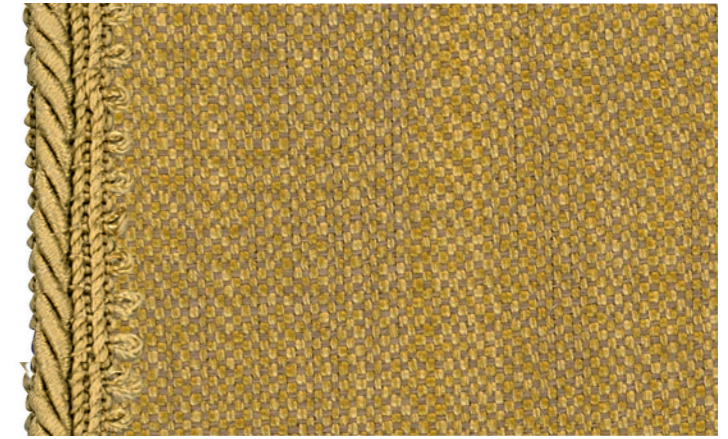
100% Polyester/Polyester/Poliestere



Martindale: 50.000

138/140

Pflege/Care/Manutenzione:



CAT.3 - FABRIC TYPE: A1 Maßstab/Scala/Scale: 1:1 cm

SMACK

GOLD | S3A90

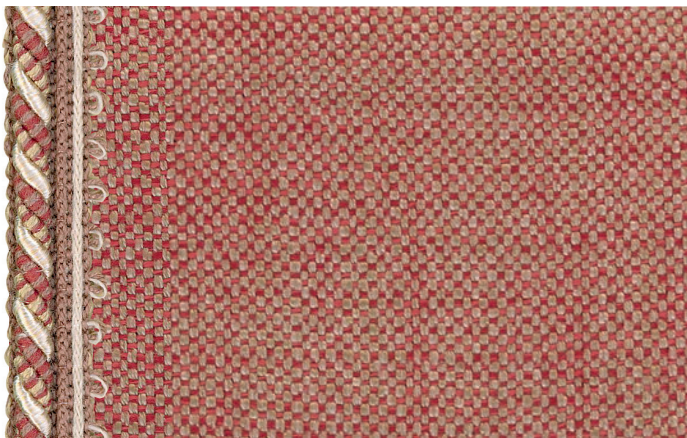
100% Polyester/Polyester/Poliestere



Martindale: 50.000

138/140

Pflege/Care/Manutenzione:



CAT.3 - FABRIC TYPE: A1 Maßstab/Scala/Scale: 1:1 cm

SMACK

RED | S3A87

100% Polyester/Polyester/Poliestere



Martindale: 50.000

138/140

Pflege/Care/Manutenzione:



CAT.3 - FABRIC TYPE: A1 Maßstab/Scala/Scale: 1:1 cm

SMACK

OCRA | S3A88

100% Polyester/Polyester/Poliestere



Martindale: 50.000

138/140

Pflege/Care/Manutenzione:



CAT.3 - FABRIC TYPE: A1 Maßstab/Scala/Scale: 1:1 cm

SMACK

FIELD | S3A91

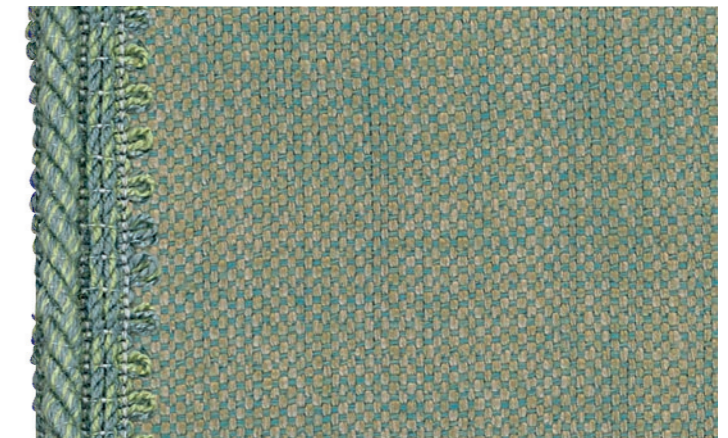
100% Polyester/Polyester/Poliestere



Martindale: 50.000

138/140

Pflege/Care/Manutenzione:



CAT.3 - FABRIC TYPE: A1 Maßstab/Scala/Scale: 1:1 cm

SMACK

OLIVE | S3A92

100% Polyester/Polyester/Poliestere



Martindale: 50.000

138/140

Pflege/Care/Manutenzione:





CAT.3 - FABRIC TYPE: A4 Maßstab/Scala/Scale: 1:1 cm

PHIABA

DOVE | S3B00

31% Baumwolle/Cotton/Cotone
68% Polyvinylchlorid/Polyvinyl chloride/Polivinilcloruro
1% Polyurethan/Polyurethane/Poliuretano



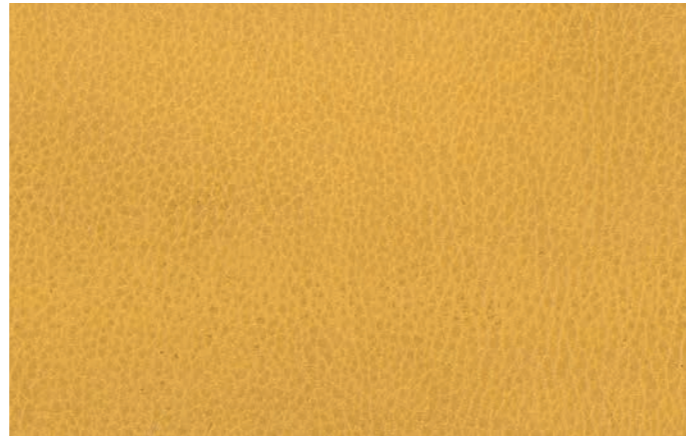
Martindale: 150.000



Pflege/Care/Manutenzione:



Reinigung mit neutraler Seife/Clean using neutral soap/Usare sapone neutro



CAT.3 - FABRIC TYPE: A4 Maßstab/Scala/Scale: 1:1 cm

PHIABA

OCRA | S3B01

31% Baumwolle/Cotton/Cotone
68% Polyvinylchlorid/Polyvinyl chloride/Polivinilcloruro
1% Polyurethan/Polyurethane/Poliuretano



Martindale: 150.000



Pflege/Care/Manutenzione:



Reinigung mit neutraler Seife/Clean using neutral soap/Usare sapone neutro



CAT.3 - FABRIC TYPE: A4 Maßstab/Scala/Scale: 1:1 cm

PHIABA

WOOD | S3B04

31% Baumwolle/Cotton/Cotone
68% Polyvinylchlorid/Polyvinyl chloride/Polivinilcloruro
1% Polyurethan/Polyurethane/Poliuretano



Martindale: 150.000



Pflege/Care/Manutenzione:



Reinigung mit neutraler Seife/Clean using neutral soap/Usare sapone neutro



CAT.3 - FABRIC TYPE: A4 Maßstab/Scala/Scale: 1:1 cm

PHIABA

CHOCOLATE | S3B05

31% Baumwolle/Cotton/Cotone
68% Polyvinylchlorid/Polyvinyl chloride/Polivinilcloruro
1% Polyurethan/Polyurethane/Poliuretano



Martindale: 150.000



Pflege/Care/Manutenzione:



Reinigung mit neutraler Seife/Clean using neutral soap/Usare sapone neutro



CAT.3 - FABRIC TYPE: A1 Maßstab/Scala/Scale: 1:1 cm

PHIABA

DATE | S3B02

100% Polyester/Polyester/Poliestere



Martindale: 50.000



Pflege/Care/Manutenzione:



Reinigung mit neutraler Seife/Clean using neutral soap/Usare sapone neutro



CAT.3 - FABRIC TYPE: A1 Maßstab/Scala/Scale: 1:1 cm

PHIABA

SAND | S3 B03

100% Polyester/Polyester/Poliestere



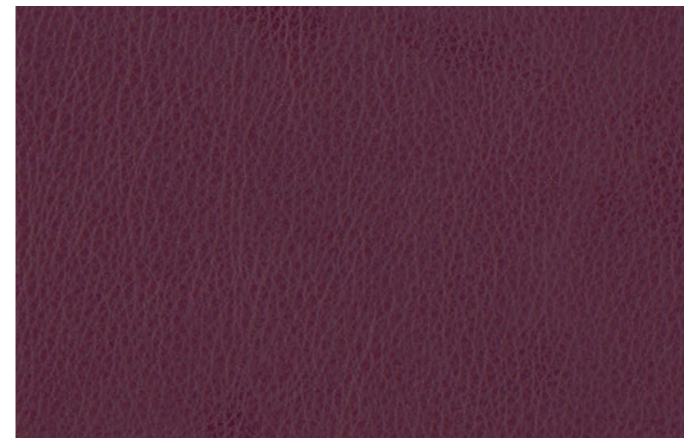
Martindale: 50.000



Pflege/Care/Manutenzione:



Reinigung mit neutraler Seife/Clean using neutral soap/Usare sapone neutro



CAT.3 - FABRIC TYPE: A1 Maßstab/Scala/Scale: 1:1 cm

PHIABA

LILLA | S3B06

100% Polyester/Polyester/Poliestere



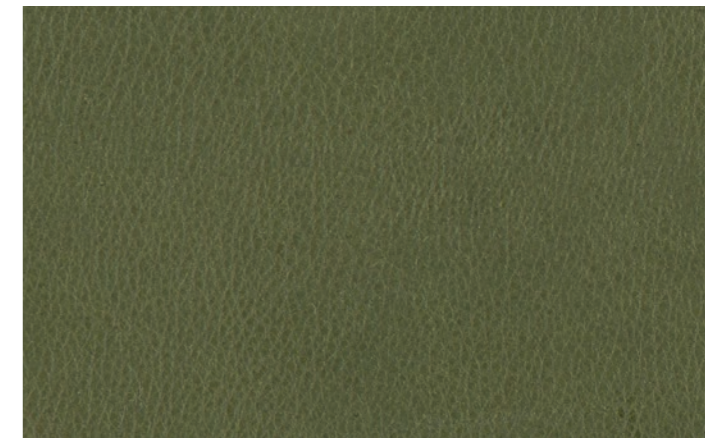
Martindale: 50.000



Pflege/Care/Manutenzione:



Reinigung mit neutraler Seife/Clean using neutral soap/Usare sapone neutro



CAT.3 - FABRIC TYPE: A1 Maßstab/Scala/Scale: 1:1 cm

PHIABA

OLIVE | S3B07

100% Polyester/Polyester/Poliestere



Martindale: 50.000



Pflege/Care/Manutenzione:



Reinigung mit neutraler Seife/Clean using neutral soap/Usare sapone neutro

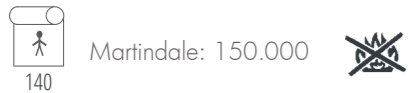


CAT.3 - FABRIC TYPE: A4 Maßstab/Scala/Scale: 1:1 cm

PHIABA

BLUE | S3B08

31% Baumwolle/Cotton/Cotone
68% Polyvinylchlorid/Polyvinyl chloride/Polivinilcloruro
1% Polyurethan/Polyurethane/Poliuretano



Pflege/Care/Manutenzione:



Reinigung mit neutraler Seife/Clean using neutral soap/Usare sapone neutro

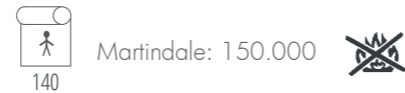


CAT.3 - FABRIC TYPE: A4 Maßstab/Scala/Scale: 1:1 cm

PHIABA

DARK | S3B09

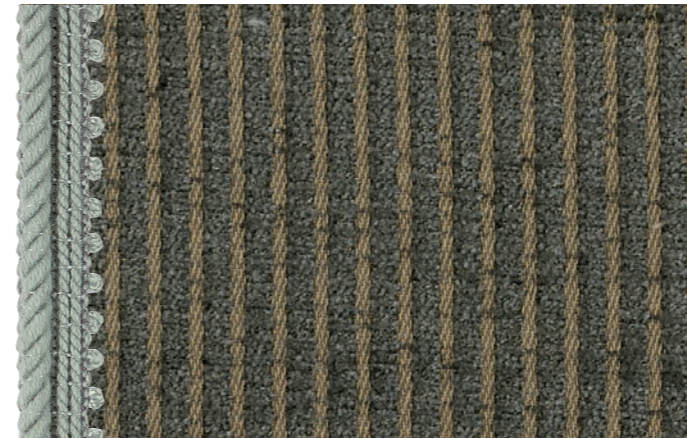
31% Baumwolle/Cotton/Cotone
68% Polyvinylchlorid/Polyvinyl chloride/Polivinilcloruro
1% Polyurethan/Polyurethane/Poliuretano



Pflege/Care/Manutenzione:



Reinigung mit neutraler Seife/Clean using neutral soap/Usare sapone neutro



CAT.4 - FABRIC TYPE: A9 Maßstab/Scala/Scale: 1:1 cm

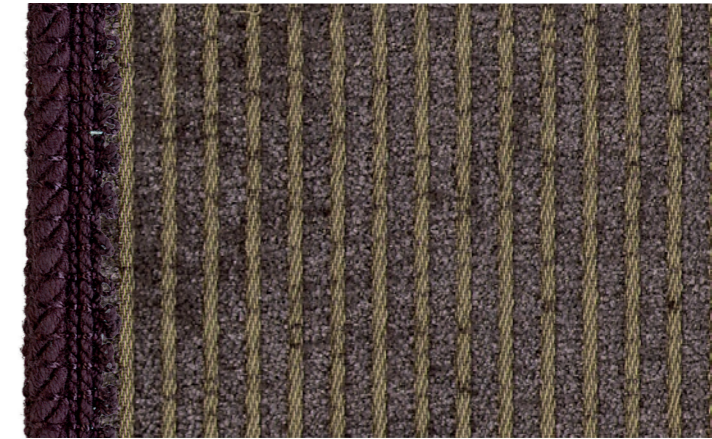
WESLEY

MUD | S4A22

92% Polyester/Polyester/Poliestere
8% Baumwolle/Cotton/Cotone



Pflege/Care/Manutenzione:



CAT.4 - FABRIC TYPE: A9 Maßstab/Scala/Scale: 1:1 cm

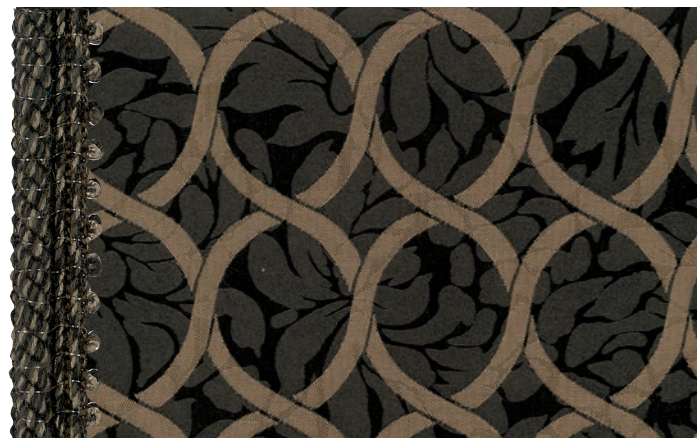
WESLEY

MAUVE | S4A23

92% Polyester/Polyester/Poliestere
8% Baumwolle/Cotton/Cotone



Pflege/Care/Manutenzione:



CAT.3 - FABRIC TYPE: A7 Maßstab/Scala/Scale: 1:2 cm

FEEL

BLACK | S3027

57% Polyester/Polyester/Poliestere
43% Viskose/Viscose/Viscosa



Pflege/Care/Manutenzione:



CAT.3 - FABRIC TYPE: A8 Maßstab/Scala/Scale: 1:5,2 cm

BERGÈ

SAND | S3042

57% Polyester/Polyester/Poliestere
43% Viskose/Viscose/Viscosa



Pflege/Care/Manutenzione:



CAT.4 - FABRIC TYPE: A9 Maßstab/Scala/Scale: 1:1 cm

WESLEY

LIGHT BLUE | S4A24

92% Polyester/Polyester/Poliestere
8% Baumwolle/Cotton/Cotone



Pflege/Care/Manutenzione:



CAT.4 - FABRIC TYPE: A9 Maßstab/Scala/Scale: 1:1 cm

WESLEY

GREEN | S4A25

92% Polyester/Polyester/Poliestere
8% Baumwolle/Cotton/Cotone



Pflege/Care/Manutenzione:





CAT.4 - FABRIC TYPE: A7 Maßstab/Scala/Scale: 1:1 cm

AVATAR

NOUGAT | S4A40

36% Viskose/Viscose/Viscosa
32% Polyacryl/Acrylic/Acrylic
22% Baumwolle/Cotton/Cotone
10% Polyester/Polyester/Poliestere



Martindale: 25.000
138/140

Pflege/Care/Manutenzione:



Fleckenfernung mit Trieline oder Trockenreinigern/Stain removal with trieline or dry detergents/Smacchiatura con trielina o detergenti a secco



CAT.4 - FABRIC TYPE: A7 Maßstab/Scala/Scale: 1:1 cm

AVATAR

CHOCOLATE | S4A41

36% Viskose/Viscose/Viscosa
32% Polyacryl/Acrylic/Acrylic
22% Baumwolle/Cotton/Cotone
10% Polyester/Polyester/Poliestere

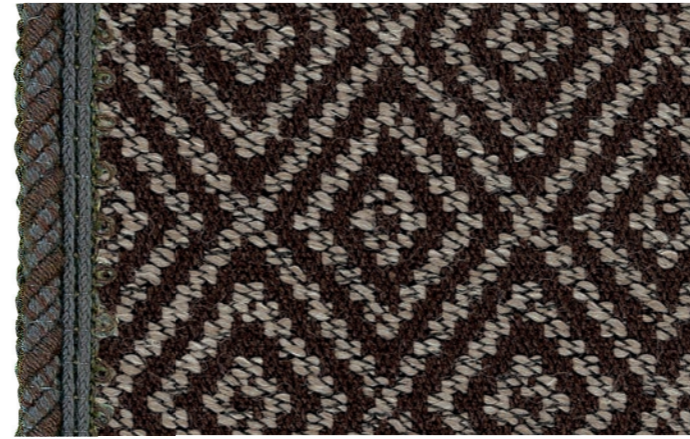


Martindale: 25.000
138/140

Pflege/Care/Manutenzione:



Fleckenfernung mit Trieline oder Trockenreinigern/Stain removal with trieline or dry detergents/Smacchiatura con trielina o detergenti a secco



CAT.4 - FABRIC TYPE: A7 Maßstab/Scala/Scale: 1:1 cm

TRISTANO

CHOCOLATE | S4A44

64% Baumwolle/Cotton/Cotone
24% Polyacryl/Acrylic/Acrylic
6% Polyamid/Polyamide/Poliamide
3% Leinen | Linen | Lino
3% Wolle | Wool | Lana

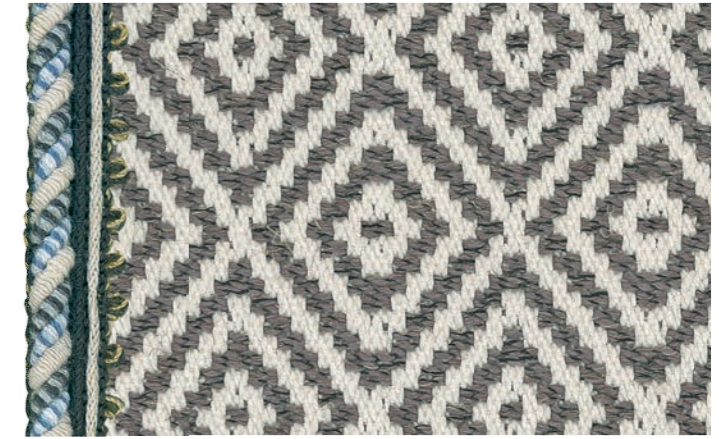


Martindale: 30.000
142/144

Pflege/Care/Manutenzione:



Fleckenfernung mit Trieline oder Trockenreinigern/Stain removal with trieline or dry detergents/Smacchiatura con trielina o detergenti a secco



CAT.4 - FABRIC TYPE: A7 Maßstab/Scala/Scale: 1:1 cm

TRISTANO

GREY | S4A45

64% Baumwolle/Cotton/Cotone
24% Polyacryl/Acrylic/Acrylic
6% Polyamid/Polyamide/Poliamide
3% Leinen | Linen | Lino
3% Wolle | Wool | Lana



Martindale: 30.000
142/144

Pflege/Care/Manutenzione:



Fleckenfernung mit Trieline oder Trockenreinigern/Stain removal with trieline or dry detergents/Smacchiatura con trielina o detergenti a secco



CAT.4 - FABRIC TYPE: A7 Maßstab/Scala/Scale: 1:1 cm

AVATAR

IVORY | S4A42

36% Viskose/Viscose/Viscosa
32% Polyacryl/Acrylic/Acrylic
22% Baumwolle/Cotton/Cotone
10% Polyester/Polyester/Poliestere



Martindale: 25.000
138/140

Pflege/Care/Manutenzione:



Fleckenfernung mit Trieline oder Trockenreinigern/Stain removal with trieline or dry detergents/Smacchiatura con trielina o detergenti a secco



CAT.4 - FABRIC TYPE: A7 Maßstab/Scala/Scale: 1:1 cm

TRISTANO

SAND | S4A43

64% Baumwolle/Cotton/Cotone
24% Polyacryl/Acrylic/Acrylic
6% Polyamid/Polyamide/Poliamide
3% Leinen | Linen | Lino
3% Wolle | Wool | Lana



Martindale: 30.000
142/144

Pflege/Care/Manutenzione:



Fleckenfernung mit Trieline oder Trockenreinigern/Stain removal with trieline or dry detergents/Smacchiatura con trielina o detergenti a secco



CAT.4 - FABRIC TYPE: A7 Maßstab/Scala/Scale: 1:1 cm

SPAGNA

BLUE | S4A50

70% Viskose/Viscose/Viscosa
30% Polyester/Polyester/Poliestere



Martindale: 20.000
138/140

Pflege/Care/Manutenzione:



CAT.4 - FABRIC TYPE: A7 Maßstab/Scala/Scale: 1:1 cm

SPAGNA

BEIGE | S4A51

70% Viskose/Viscose/Viscosa
30% Polyester/Polyester/Poliestere



Martindale: 20.000
138/140

Pflege/Care/Manutenzione:





CAT.4 - FABRIC TYPE: A7

SPAGNA

GRAY | S4A52

70% Viskose/Viscose/Viscosa
30% Polyester/Polyester/Poliestere



Martindale: 20.000
138/140

Pflege/Care/Manutenzione:



CAT.4 - FABRIC TYPE: A7

SPAGNA

FIELD | S4A53

70% Viskose/Viscose/Viscosa
30% Polyester/Polyester/Poliestere



Martindale: 20.000
138/140

Pflege/Care/Manutenzione:



CAT.4 - FABRIC TYPE: A7

SPAGNA

AVIO | S4A56

70% Viskose/Viscose/Viscosa
30% Polyester/Polyester/Poliestere



Martindale: 20.000
138/140

Pflege/Care/Manutenzione:



CAT.4 - FABRIC TYPE: A7

SPAGNA

OLIVE | S4A57

70% Viskose/Viscose/Viscosa
30% Polyester/Polyester/Poliestere



Martindale: 20.000
138/140

Pflege/Care/Manutenzione:



CAT.4 - FABRIC TYPE: A7

SPAGNA

OCRA | S4A54

70% Viskose/Viscose/Viscosa
30% Polyester/Polyester/Poliestere



Martindale: 20.000
138/140

Pflege/Care/Manutenzione:



CAT.4 - FABRIC TYPE: A7

SPAGNA

RED | S4A55

70% Viskose/Viscose/Viscosa
30% Polyester/Polyester/Poliestere



Martindale: 20.000
138/140

Pflege/Care/Manutenzione:



CAT.5 - FABRIC TYPE: A8

Maßstab/Scala/Scale: 1:2,5 cm

SIENA

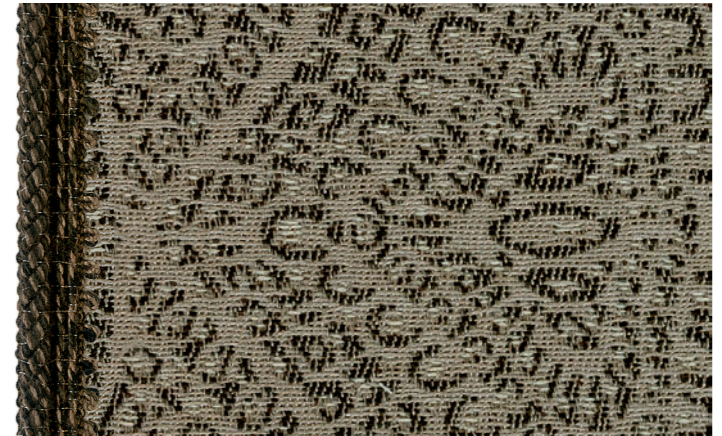
BLUE | S5A16

100% Polyester/Polyester/Poliestere



Martindale: 20.000
140

Pflege/Care/Manutenzione:



CAT.5 - FABRIC TYPE: A8

Maßstab/Scala/Scale: 1:1 cm

SIENA

MUD | S5A17

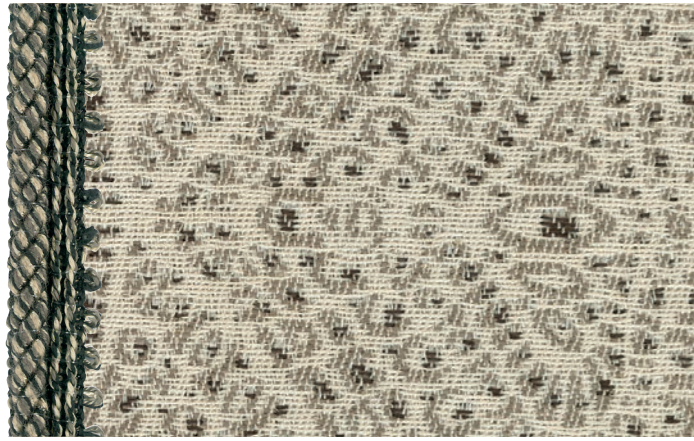
100% Polyester/Polyester/Poliestere



Martindale: 20.000
140

Pflege/Care/Manutenzione:





CAT.5 - FABRIC TYPE: A8 Maßstab/Scala/Scale: 1:1 cm

SIENA

BEIGE | S5A18

100% Polyester/Polyester/Poliestere



Martindale: 20.000

140

Pflege/Care/Manutenzione:



CAT.5 - FABRIC TYPE: A11 Maßstab/Scala/Scale: 1:1,7 cm

AMALFI

GRAY | S5A19

58% Polyester/Polyester/oliestere
36% Polyacryl/Acrylic/Acrylic
6% Viskose/Viscose/Viscosa



Martindale: 29.000

140

Pflege/Care/Manutenzione:



CAT.7 - FABRIC TYPE: A3 Maßstab/Scala/Scale: 1:1 cm

LINEA

WENGE | S7726

100% Leder/Leather/Pelle



Pflege/Care/Manutenzione:
Reinigung nur mit speziellen Produkten
Clean only with specific products
Usare solo prodotti specifici



CAT.7 - FABRIC TYPE: A3 Maßstab/Scala/Scale: 1:1 cm

LINEA

DATE | S7722

100% Leder/Leather/Pelle



Pflege/Care/Manutenzione:
Reinigung nur mit speziellen Produkten
Clean only with specific products
Usare solo prodotti specifici



CAT.5 - FABRIC TYPE: A11 Maßstab/Scala/Scale: 1:1,7 cm

AMALFI

IVORY | S5A20

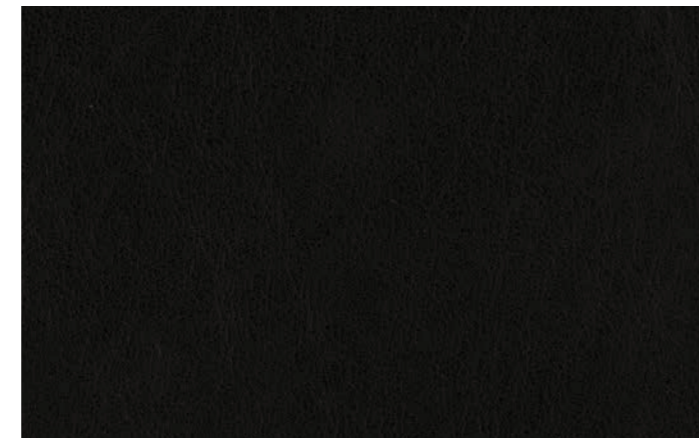
58% Polyester/Polyester/oliestere
36% Polyacryl/Acrylic/Acrylic
6% Viskose/Viscose/Viscosa



Martindale: 29.000

140

Pflege/Care/Manutenzione:



CAT.7 - FABRIC TYPE: A3 Maßstab/Scala/Scale: 1:1 cm

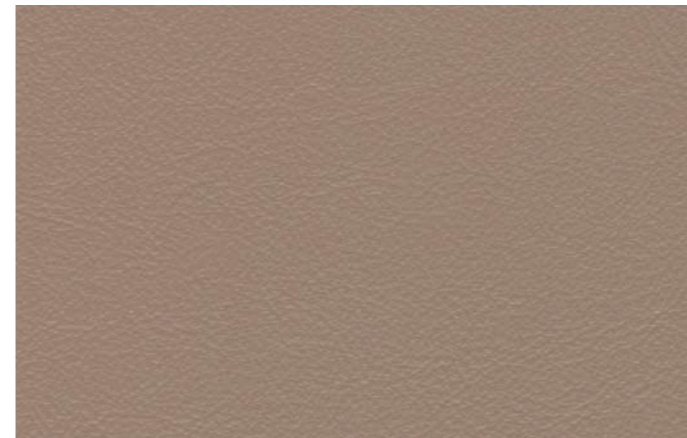
LINEA

DARK | S7710

100% Leder/Leather/Pelle



Pflege/Care/Manutenzione:
Reinigung nur mit speziellen Produkten
Clean only with specific products
Usare solo prodotti specifici



CAT.7 - FABRIC TYPE: A3 Maßstab/Scala/Scale: 1:1 cm

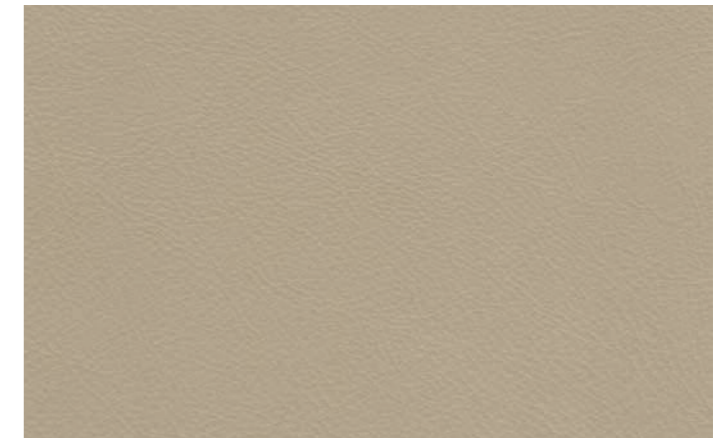
LINEA

DUNE | S7A02

100% Leder/Leather/Pelle



Pflege/Care/Manutenzione:
Reinigung nur mit speziellen Produkten
Clean only with specific products
Usare solo prodotti specifici



CAT.7 - FABRIC TYPE: A3 Maßstab/Scala/Scale: 1:1 cm

LINEA

PEARL | S7A01

100% Leder/Leather/Pelle



Pflege/Care/Manutenzione:
Reinigung nur mit speziellen Produkten
Clean only with specific products
Usare solo prodotti specifici



CAT.7 - FABRIC TYPE: A3 Maßstab/Scala/Scale: 1:1 cm

LINEA

RAIN | S7730

100% Leder/Leather/Pelle



Pflege/Care/Manutenzione:
Reinigung nur mit speziellen Produkten
Clean only with specific products
Usare solo prodotti specifici



CAT.7 - FABRIC TYPE: A3 Maßstab/Scala/Scale: 1:1 cm

LINEA

GRAY | S7A00

100% Leder/Leather/Pelle



Pflege/Care/Manutenzione:
Reinigung nur mit speziellen Produkten
Clean only with specific products
Usare solo prodotti specifici



CAT.7 - FABRIC TYPE: A3 Maßstab/Scala/Scale: 1:1 cm

LINEA

LOTUS | S7A05

100% Leder/Leather/Pelle



Pflege/Care/Manutenzione:
Reinigung nur mit speziellen Produkten
Clean only with specific products
Usare solo prodotti specifici



CAT.7 - FABRIC TYPE: A3 Maßstab/Scala/Scale: 1:1 cm

LINEA

SIENNA | S7A08

100% Leder/Leather/Pelle



Pflege/Care/Manutenzione:
Reinigung nur mit speziellen Produkten
Clean only with specific products
Usare solo prodotti specifici



CAT.7 - FABRIC TYPE: A3 Maßstab/Scala/Scale: 1:1 cm

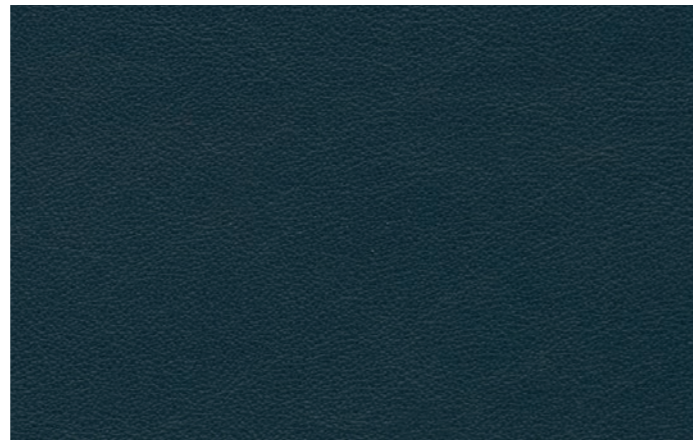
LINEA

GREEN | S7A03

100% Leder/Leather/Pelle



Pflege/Care/Manutenzione:
Reinigung nur mit speziellen Produkten
Clean only with specific products
Usare solo prodotti specifici



CAT.7 - FABRIC TYPE: A3 Maßstab/Scala/Scale: 1:1 cm

LINEA

NIGHT | S7A04

100% Leder/Leather/Pelle



Pflege/Care/Manutenzione:
Reinigung nur mit speziellen Produkten
Clean only with specific products
Usare solo prodotti specifici



CAT.7 - FABRIC TYPE: A3 Maßstab/Scala/Scale: 1:1 cm

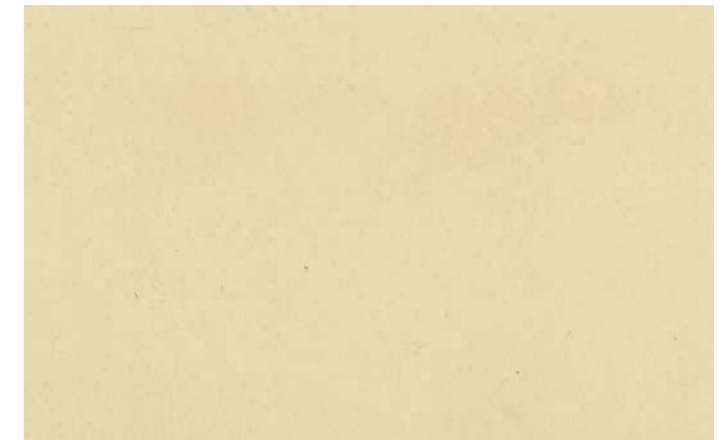
LINEA

ED | S7736

100% Leder/Leather/Pelle



Pflege/Care/Manutenzione:
Reinigung nur mit speziellen Produkten
Clean only with specific products
Usare solo prodotti specifici



CAT.7 - FABRIC TYPE: A3 Maßstab/Scala/Scale: 1:1 cm

LINEA

CREAM | S7714

100% Leder/Leather/Pelle



Pflege/Care/Manutenzione:
Reinigung nur mit speziellen Produkten
Clean only with specific products
Usare solo prodotti specifici



CAT.7 - FABRIC TYPE: A3 Maßstab/Scala/Scale: 1:1 cm

LINEA

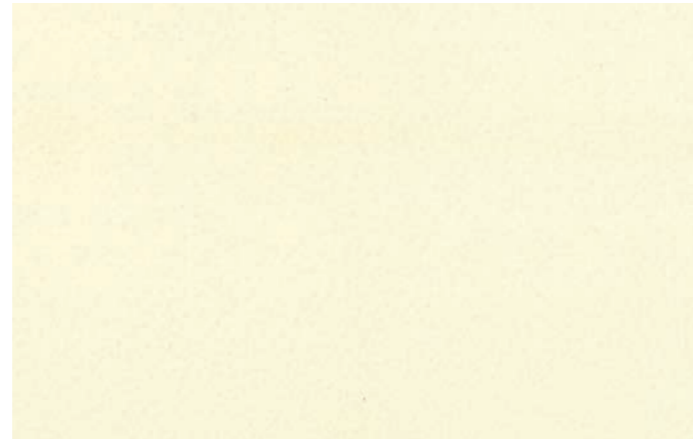
WHITE | S7A07

100% Leder/Leather/Pelle



Pflege/Care/Manutenzione:

Reinigung nur mit speziellen Produkten
Clean only with specific products
Usare solo prodotti specifici



CAT.7 - FABRIC TYPE: A3 Maßstab/Scala/Scale: 1:1 cm

LINEA

MILK | S7712

100% Leder/Leather/Pelle



Pflege/Care/Manutenzione:

Reinigung nur mit speziellen Produkten
Clean only with specific products
Usare solo prodotti specifici



CAT.7 - FABRIC TYPE: A3 Maßstab/Scala/Scale: 1:1 cm

SEQUOIA

BROWN | S7822

100% Leder/Leather/Pelle



Pflege/Care/Manutenzione:

Reinigung nur mit speziellen Produkten
Clean only with specific products
Usare solo prodotti specifici



CAT.7 - FABRIC TYPE: A3 Maßstab/Scala/Scale: 1:1 cm

SEQUOIA

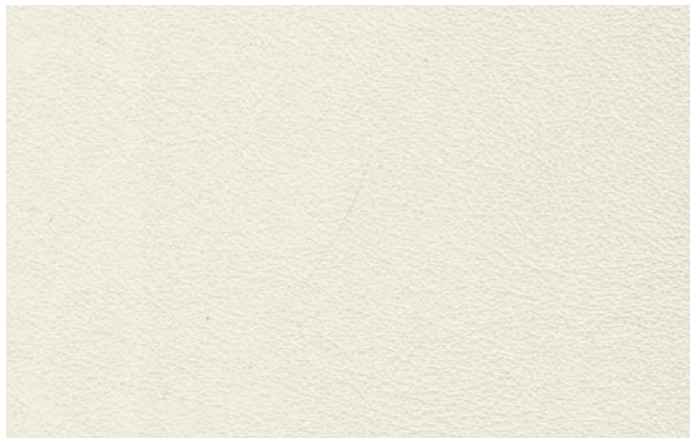
GRAY | S7829

100% Leder/Leather/Pelle



Pflege/Care/Manutenzione:

Reinigung nur mit speziellen Produkten
Clean only with specific products
Usare solo prodotti specifici



CAT.7 - FABRIC TYPE: A3 Maßstab/Scala/Scale: 1:1 cm

LINEA

OPTICAL | S7A06

100% Leder/Leather/Pelle



Pflege/Care/Manutenzione:

Reinigung nur mit speziellen Produkten
Clean only with specific products
Usare solo prodotti specifici



CAT.7 - FABRIC TYPE: A3 Maßstab/Scala/Scale: 1:1 cm

SEQUOIA

CHOCOLATE | S7824

100% Leder/Leather/Pelle



Pflege/Care/Manutenzione:

Reinigung nur mit speziellen Produkten
Clean only with specific products
Usare solo prodotti specifici



Europäisches Leder auf Bullenrohware mit natürlicher Oberfläche. Stärke 0,9 - 1,1 mm.
Durchschnittliche Hautgröße ca. 4,8 - 5,0 qm.
Hochwertiges Leder mit weichem Griff und seidenmatter Optik.

Bovine of European origin, lightly buffed natural grain, finished thickness 0.9 - 1.1 mm.
The average size of each hide is around 4.8 - 5.0 sqm.
Chrome tannage. Trough dyed; finishing with resins and pigments.
Article with a pigmented and protective coat, with a soft, waxy feel and semi-matt appearance.

Pelle bovina mezzo fiore a grana naturale di spessore finito 0,9 - 1,1 mm.
Superficie media 4,8 - 5,0 m2. Concia al cromo. Tintura passante; rifinitura con resine e pigmenti.
Articolo con mano morbida, tatto ceroso e aspetto semiopaco.

Die Selva Stoff- und Lederkollektion ist in die Klassen 2 – 7 unterteilt, sie entsprechen den Preiskategorien unserer Preisliste.

Farbabweichungen

Geringe Farbtoleranzen innerhalb der Stoffdessins sind aus technischen Gründen innerhalb des Stoff-Produktionsverfahrens unvermeidbar; daher kann bei Nachbestellungen keine Gewähr für Farbgleichheit übernommen werden. Trotz aufwändiger Drucktechnik sind Farbabweichungen zwischen den Stoffen und deren Abbildungen unvermeidbar, sie bieten daher keinen Grund für Beanstandungen.

Velours

Bei Velours sollten Sie beachten, dass sich durch Einflüsse von Druck, Wärme und Feuchtigkeit, wie sie beim Sitzen auf den Polstermöbeln entstehen, im Lauf der Zeit geringe Florverlagerungen bilden können. Florverlagerungen äußern sich in mehr oder weniger sichtbaren unterschiedlichen Schattierungen der Oberflächen. Diese Eigenschaften von Velours werden im Fachjargon als Gebrauchslüster oder Sitzspiegel bezeichnet, sie sind warentypisch und daher nicht zu vermeiden.

Pflege der Polstermöbel

Wie alle Materialien des täglichen Gebrauchs, bedürfen auch Möbel-Bezugstoffe einer regelmäßigen Pflege, sie sind ständiger Staub- und Kontaktverschmutzung ausgesetzt. Für die Unterhaltspflege und die Reinigung von Polstermöbeln von leichten Verschmutzungen, die durch normalen Gebrauch entstanden sind, sollten Sie den Staub durch regelmäßiges intensives Absaugen und eventuelles Klopfen und Bürsten so gut wie möglich entfernen. Grundreinigungen und das Entfernen von Flecken und stärkeren Verschmutzungen empfehlen wir einem kompetenten Fachbetrieb zu übertragen.

Produktionsbedingte Änderungen in Form, Preis und Liefermöglichkeiten sowie drucktechnisch bedingte Farbabweichungen vorbehalten.

La nostra collezione di tessuti e di pelli per rivestimento è suddivisa in classi comprese tra 2 e 7 e corrispondono alle categorie esposte nel nostro listino prezzi.

Differenze di colore

Per ordini di completamento effettuati in un secondo tempo, per motivi che si riferiscono al processo di produzione, sono inevitabili lievi variazioni di colore dei tessuti, pertanto non possiamo garantirne la perfetta corrispondenza con la precedente fornitura. Nel catalogo fotografico tessuti, nonostante una sofisticata tecnica di stampa, i colori riprodotti sono da considerarsi solo di riferimento. Le eventuali differenze corrispondenti ai due casi descritti non possono essere accettate come causa di reclamo.

Velluto

Se l'imbottito è rivestito in velluto va considerato che l'uso quotidiano, la pressione, il calore, l'umidità a cui viene sottoposto può provocare nel tempo uno spostamento del pelo. Si vengono così a formare delle sfumature, più o meno visibili, sulla superficie: queste caratteristiche vengono chiamate dagli esperti „impronte di seduta“, sono tipiche di questo materiale e quindi inevitabili, e non possono costituire motivo di reclamo.

Manutenzione degli imbottiti

Come tutti i materiali d'uso quotidiano, anche i tessuti di rivestimento necessitano di una periodica manutenzione poiché sono continuamente esposti alla polvere e allo sporco da contatto. Per la cura e la pulizia degli imbottiti dallo sporco causato dal normale uso quotidiano, va eliminata la polvere il più possibile passando regolarmente l'aspirapolvere o con un battipanni o una spazzola. Per la pulizia approfondita o l'eliminazione di macchie e di sporco intenso è sempre consigliabile affidarsi a mani esperte.

Ci riserviamo il diritto di modifiche di forma, prezzi e consegne dovute a esigenze di natura tecnica. Differenze di colori di stampa non sono contestabili.

Our Fabric and Leather Collection is divided into Classes 2 - 7 which correspond to the price categories in our price list.

Differences in Colour

Because of technical reasons within the fabric production process, slight colour tolerances within the fabric pattern are unavoidable. Therefore, there can be no guarantee of an exact colour match with subsequent orders. In spite of the advanced printing technology, differences in colour between the actual fabrics and their illustrations are unavoidable. They therefore do not represent grounds for complaints or returns.

Velours

With velour, you should be aware that the influences of pressure, heat, and humidity, such as occur when sitting on upholstered furniture, can lead over the course of time to the formation of slight changes in the pile. These shifts in the pile result in more or less visibly different shadings of the surface. This property of velour is known in the technical jargon as „luster from use“ or „shiny seat“. These are typical of the article and therefore cannot be avoided.

Care of Upholstered Furniture

Like all materials that experience everyday use, furniture slipcover fabrics require regular care, since they are exposed to constant soiling from dust and contact. For the regular care and cleaning of upholstered furniture with light soiling that has occurred through normal use, you should remove the dust as well as possible through intense vacuuming and possible brushing or beating lightly. For thorough cleaning and the removal of stains and heavy soiling, we recommend entrusting the job to competent experts.

We reserve the right to change forms or prices due to production requirements, as well as to change delivery arrangements. Differences with the printed colours do not constitute grounds for claims.