

FINAL CHAPTER

PRODUCT FINISHES / HIGH-TECH
PRODUCT FINISHES - LIGHTING
TERMS & CONDITIONS

PRODUCT FINISHES

TECHNICAL CHARACTERISTICS

Jetclass' furniture pieces are made of cherry wood and waterproof MDF, which can have different finishes (see pages 282 to 286).

The metallic details are made in stainless steel and for lacquered metal finishing the material is iron.

The characteristics of tempered glass and mirror are available on pages 286 to 290.

Our palette includes matte, gloss and high-gloss finishes.

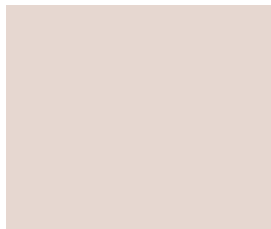
All Jetclass' products are supplied with the following logo:



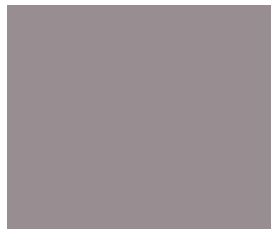
COLOURS

MDF ELEMENTS

Matte, Gloss & High-Gloss Lacquers



Nude



Lilac



Mocha



Soft Green



Green sea



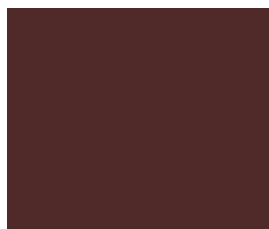
Deep Green



Ash Blue



Deep Grey



Tawny Port



Dim Grey



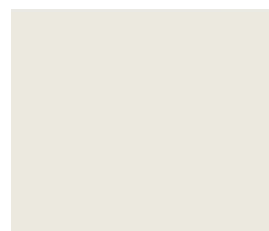
Coral



Taupe



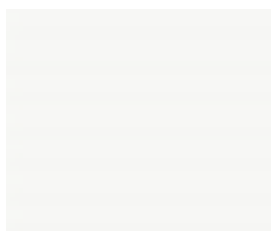
Camel



Cream Dubai



Black



White



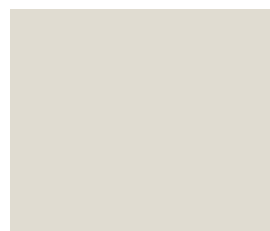
Midnight Blue



Pool Grey



Bright Grey



Greige

COLOURS & TEXTURES

MDF ELEMENTS

Matte, Gloss & High-Gloss Lacquers with Patina



Aged Silver Rustic



Black Silver Lead

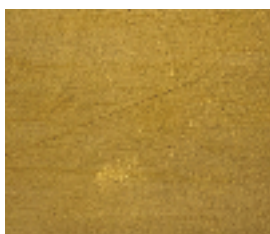


Aged Gold



Golden Black

Matte, Gloss & High-Gloss Leaves with Patina



Gold



Aged Gold



Silver



Aged Silver



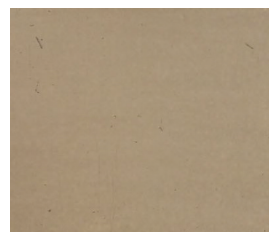
Copper



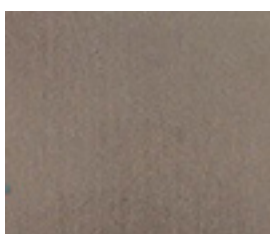
Aged Copper



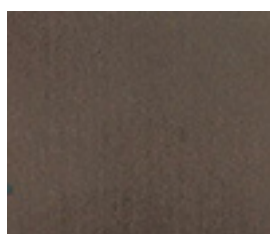
Champagne



Aged Champagne



Smoke

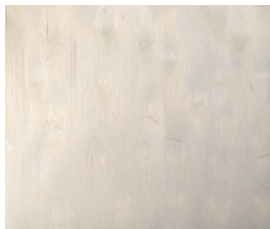


Gun Metal

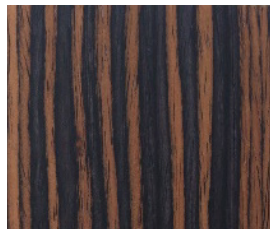
COLOURS & WOOD VENEERS

WOOD VENEERS | MDF ELEMENTS

Wood Veneers



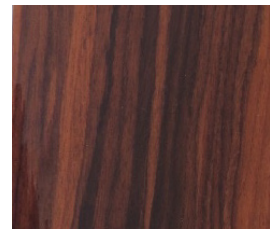
Birdseye



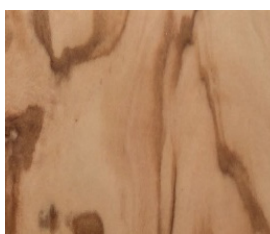
Ebony



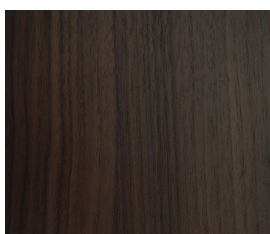
Black Wengue



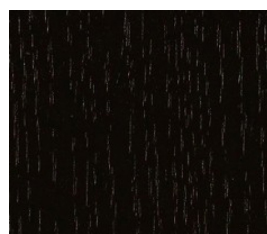
Exotic Wood



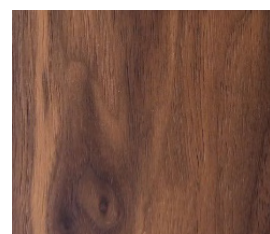
Olive



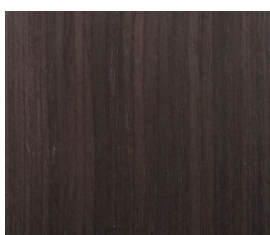
Dark Walnut



Chocolate Oak



Walnut

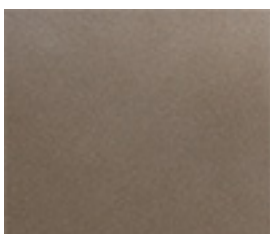


Taupe Oak

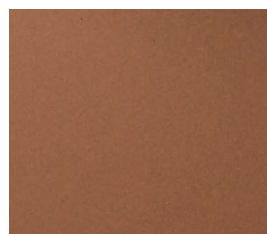
Metallic Lacquers



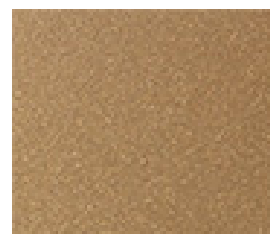
Gun Metal



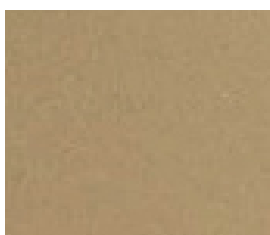
Smoke



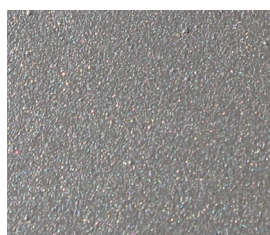
Copper



Gold



Champagne



Silver

COLOURS & METALS

METALLIC ELEMENTS

Polished Stainless Steels



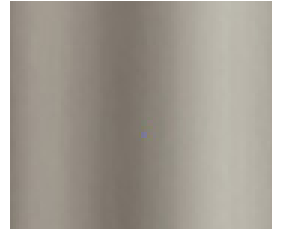
Gold



Champagne



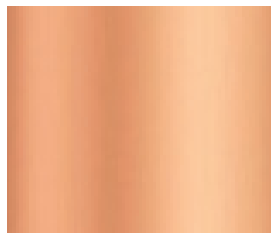
Gun Metal



Smoke



Raw

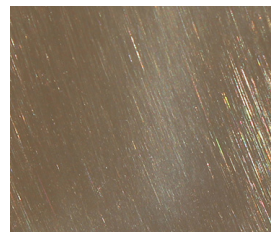


Copper

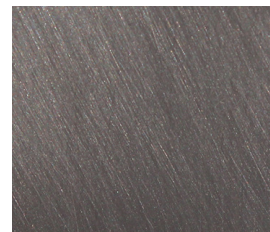
Brushed Stainless Steels



Gold



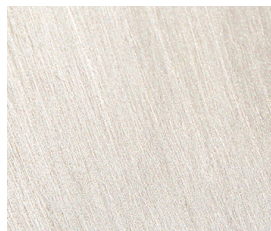
Champagne



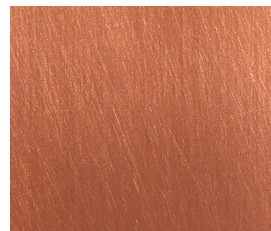
Gun Metal



Smoke



Raw



Copper

COLOURS & TEXTURES

DECORATIVE ELEMENTS

Decorative Tacks



T10 Gold

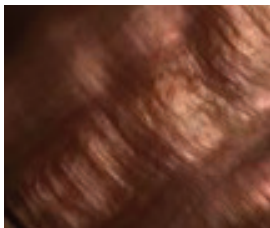


T11 Old Gold

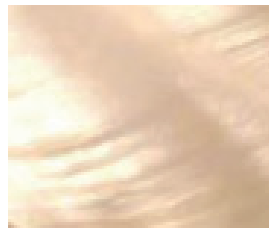


T12 Silver

Nacre Handles



H01



H02

COLOURS

MIRROR ELEMENTS | GLASS ELEMENTS

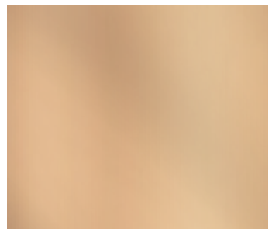
Mirror Colours



Gold



Grey



Bronze

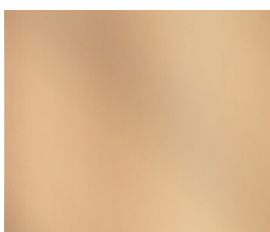


Transparent



Aged

Glass Colours



Bronze



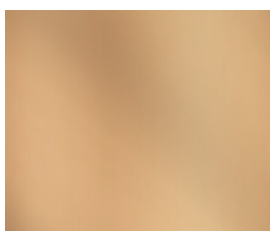
Grey



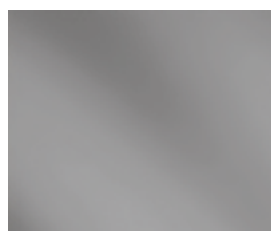
Transparent



Pure



Frosted Bronze



Frosted Grey

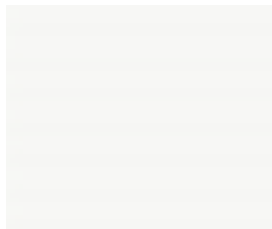


Frosted Transparent

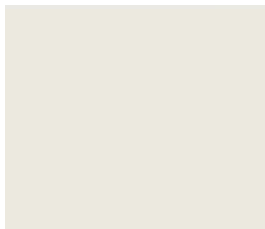
COLOURS

LACQUERED GLASS

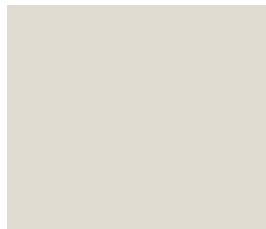
Lacquered Glass Colours



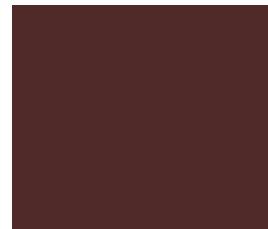
White



Cream Dubai



Greige



Tawny Port



Bright Grey



Pool Grey



Midnight Blue



Black

TEXTURES

MARBLES | CERAMIC COATING ELEMENTS

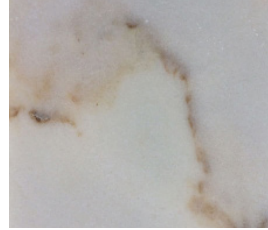
Marbles



Carrara



Nero Marquina



Blanc Nude

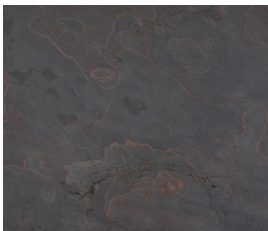


Emperador Dark



Forest Green

Stone Leaves



Rose



Dim Grey

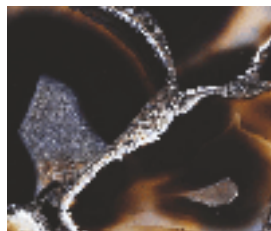


Natural

Printed Glasses



White & Gold Agata



Black Agata

COLOURS & TEXTURES

FABRIC CLASS C

Stone Satin



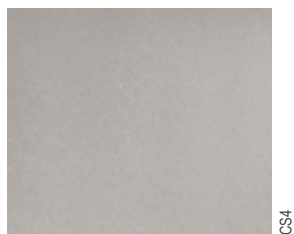
CS1



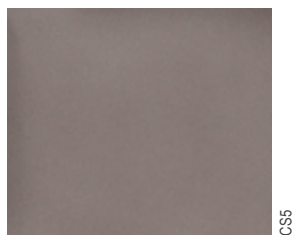
CS2



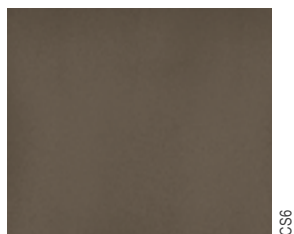
CS3



CS4



CS5



CS6

Width: 140 cm
Composition: 57%PU 9%CO 22%PES
Martindale: 50.000 (ISO 12947-2)
Repeat: N/A
Flame resistance: EN1021-1+2
Cleaning:

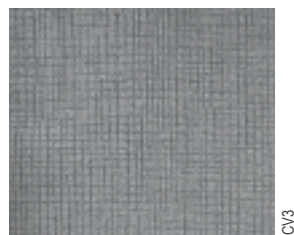
Vendôme Velvet



CV1



CV2



CV3



CV4



CV5



CV6

Width: 140cm
Composition: 100%PL
Martindale: 45.000
Repeat: N/A
Flame resistance: BS 5852 UK fire rating
Cleaning:

Euphoria Linen



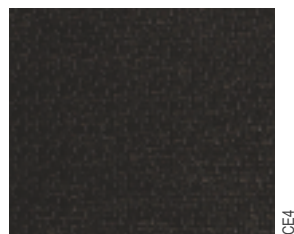
CE1



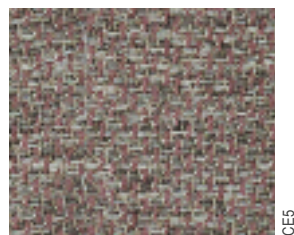
CE2



CE3



CE4



CE5



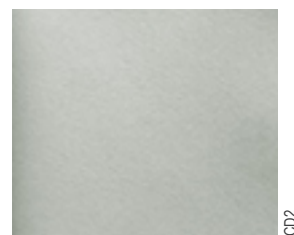
CE6

Width: 140cm
Composition: 42%PP 42%PES 16%CO
Martindale: 85.000
Repeat: N/A
Flame resistance: does not comply
Cleaning:

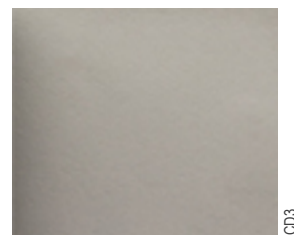
Dahl Faux leather



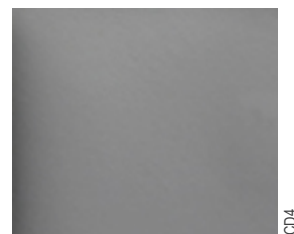
CD1



CD2



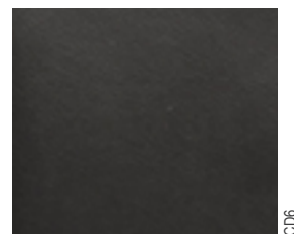
CD3



CD4



CD5



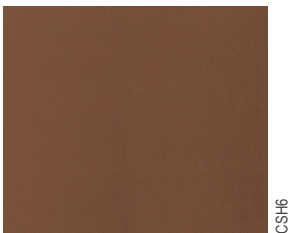
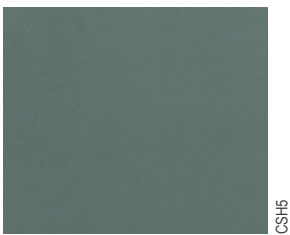
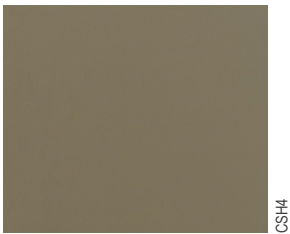
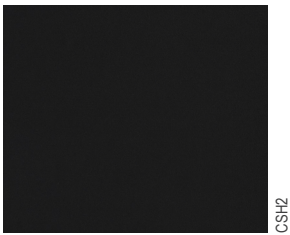
CD6

Width: 138cm
Composition: 30%CO 45%PES
25%regenerated leather
Martindale: 40.000
Flame resistance: does not comply
Cleaning:

COLOURS & TEXTURES

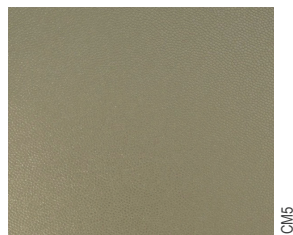
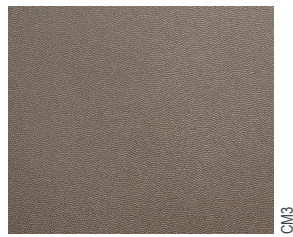
FABRIC CLASS C

Sahara Velvet



Width: 145cm
Composition: 100% PL
Martindale: 60.000
Cleaning: 

Molière Faux leather

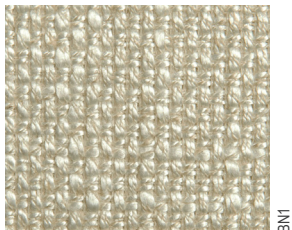


Width: 140 cm
Coating Composition: 98%PVC 2PU
Base cloth composition: 78%CO 22%PL
Abrasion: 90.000
Flame resistance: EN1021-1+2
Cleaning: microfibre cloth & cold water only

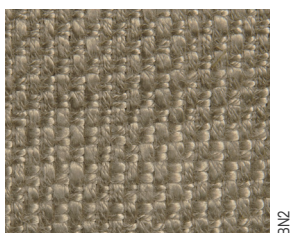
COLOURS & TEXTURES

FABRICS CLASS B

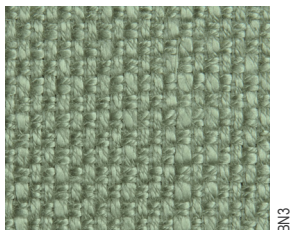
North Linen



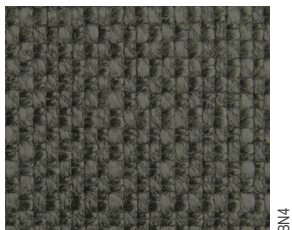
BN1



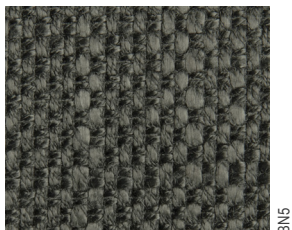
BN2



BN3



BN4



BN5



BN6

Width: 140 cm
Composition: 66% VI + 22% VI + 12% CO
Weight: 730 g/m
Martindale: 51.000
Cleaning: ☐ ⚠ ☒ ☑ ☉

Razza Faux leather



BR1



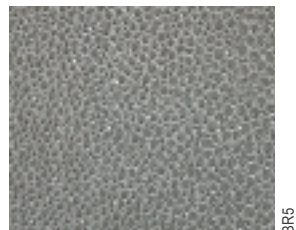
BR2



BR3



BR4



BR5



BR6

Width: 150 cm
Composition: 2%PU 73%PVC 25% CO
Martindale: 30.000
Repeat: N/A
Cleaning: microfibre cloth & cold water only

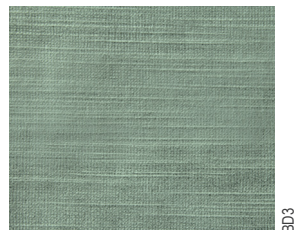
Donna Velvet



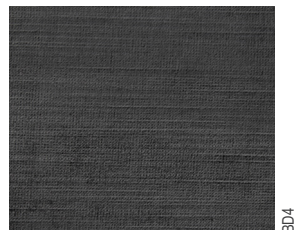
BD1



BD2



BD3



BD4



BD5



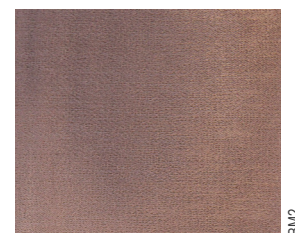
BD6

Width: 137 cm
Composition: Basic: 68% VI 26% CO
6% PL Pile: 100% VI
Martindale: 40.000
Repeat: N/A
Cleaning: ☉

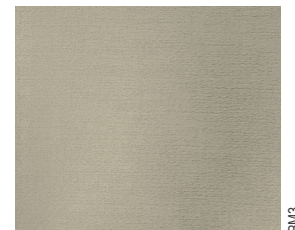
Missy Satin



BM1



BM2



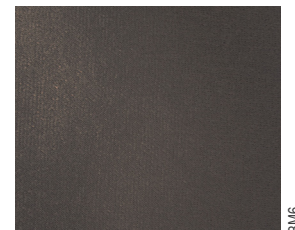
BM3



BM4



BM5



BM6

Width: 143 cm
Composition: 97% polyester 3% cotton
Martindale: 100.000
Repeat: N/A
Cleaning: ☐ ⚠ ☒ ☑ ☉

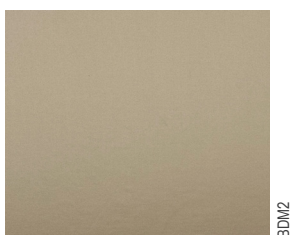
COLOURS & TEXTURES

FABRICS CLASS B

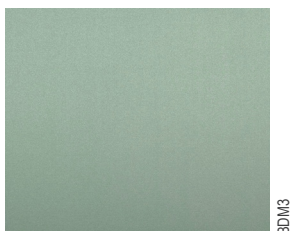
Drummond Satin



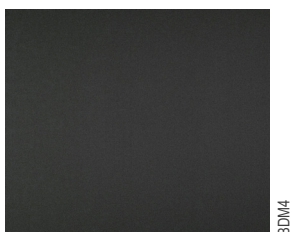
BDM1



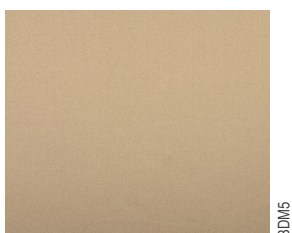
BDM2



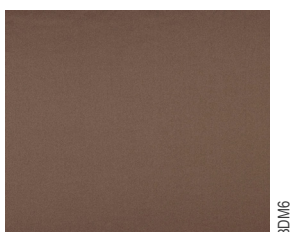
BDM3



BDM4



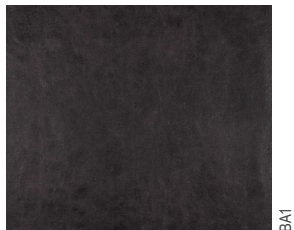
BDM5



BDM6

Width: 138 cm
Composition: 60% CO 40% PES
Martindale: 35.000
Cleaning:

Artù Faux leather



BA1



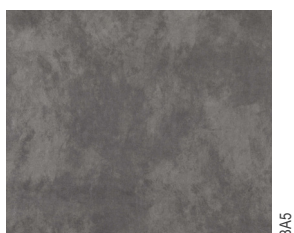
BA2



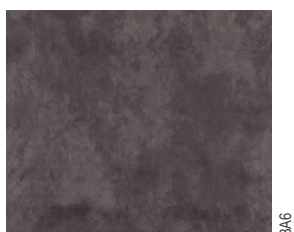
BA3



BA4



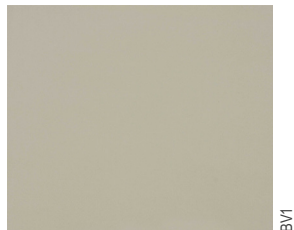
BA5



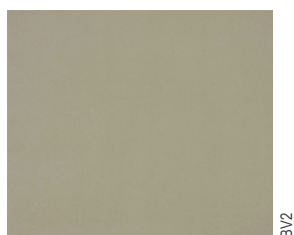
BA6

Width: 140 cm
Composition: 51% CO 42% PL 7% PC
Cleaning:

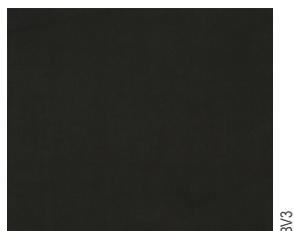
Vancouver Suede



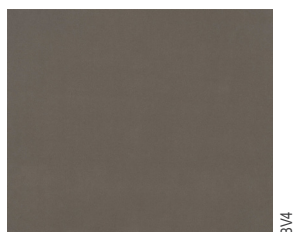
BV1



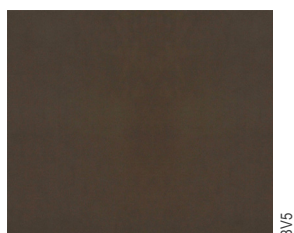
BV2



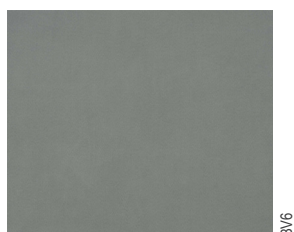
BV3



BV4



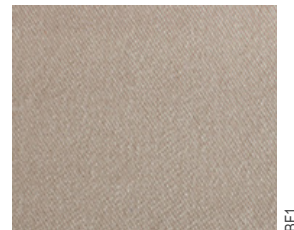
BV5



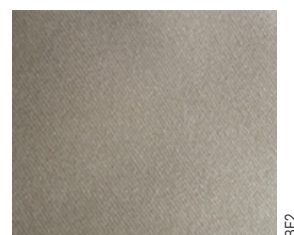
BV6

Width: 142 cm
Composition: 93% PL 7% PU
Cleaning:

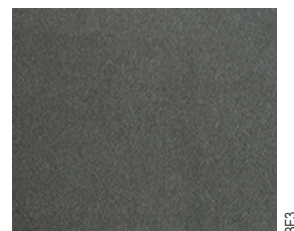
Faith Velvet



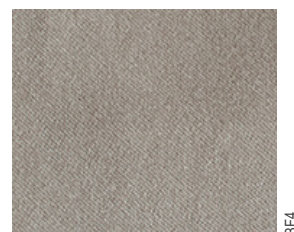
BF1



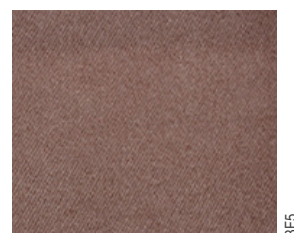
BF2



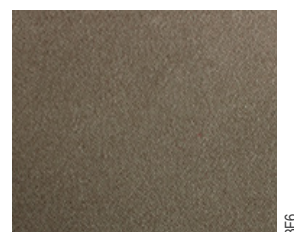
BF3



BF4



BF5



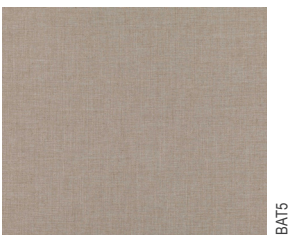
BF6

Width: 140 cm
Composition: 100% PL
Cleaning:

COLOURS & TEXTURES

FABRICS CLASS B

Austin Linen



Width: 148 cm

Composition: 40% LI 30% VI 19% PL 9% CO
2% PC

Cleaning:     

COLOURS & TEXTURES

FABRICS CLASS A

Mars Faux leather



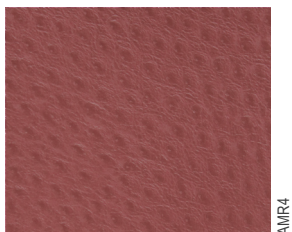
AMR1



AMR2



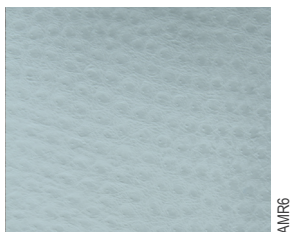
AMR3



AMR4



AMR5



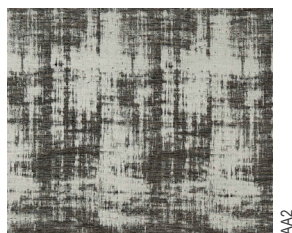
AMR6

Width: 140cm
Composition: 5%co 85%pvc 1%pu
9%pes
Martindale: 100.000
Cleaning: ☐ ☒ ☓ ☔

Athene Linen



AA1



AA2



AA3



AA4



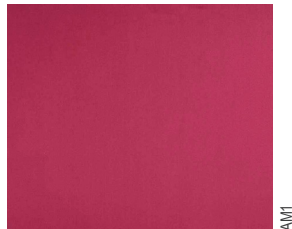
AA5



AA6

Width: 140cm
Composition: 50%co 25%pc 15%pa
10%pes
Martindale: 50.000
Cleaning: ☒ ☓ ☔ ☐

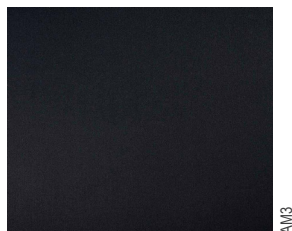
Memphis Satin



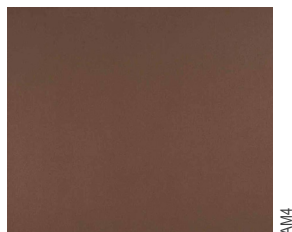
AM1



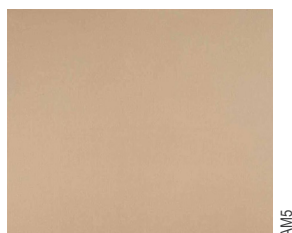
AM2



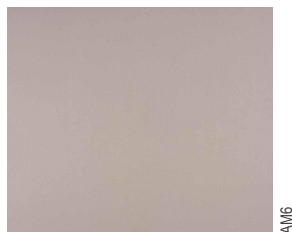
AM3



AM4



AM5



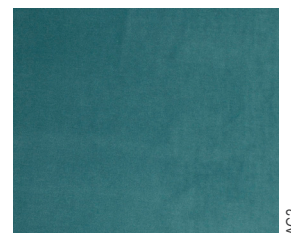
AM6

Width: 138cm
Composition: 100% co
Martindale: 30.000
Cleaning: ☒ ☓ ☔ ☐

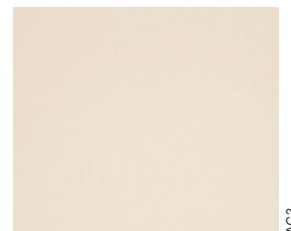
Glam Velvet



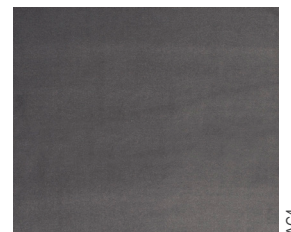
AG1



AG2



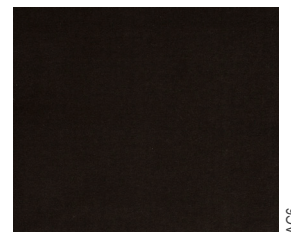
AG3



AG4



AG5



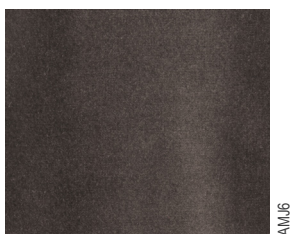
AG6

Width: 140cm
Composition: pile:50% cotton 50%
modal, groundmaterial: 43% cotton,
30% modal, 27% polyester
Martindale: 50.000
Cleaning: ☒ ☓ ☔ ☐

COLOURS & TEXTURES

FABRICS CLASS A

Marjorie Velvet

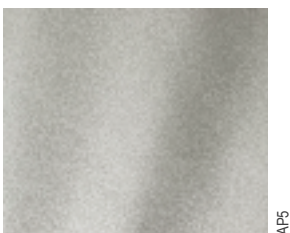
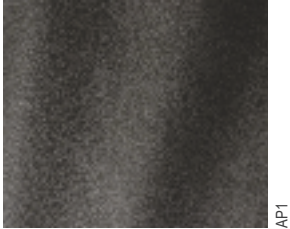


Width: 145cm
Composition: 100% PL
Martindale: 60.000
Cleaning:     

COLOURS & TEXTURES

LEATHERS

Passion Leather



Thickness: 0,9 - 1,1 mm
Color fastness: ≥ 5 blue scale
Finish adhesion: $\geq 2,5$ n/cm
Flexing endurance: > 50.000
Flame resistance: does not comply
Cleaning: microfibre cloth & cold water only

Shore Leather



Thickness: 0,8 - 1,0 mm
Color fastness: ≥ 5 blue scale
Finish adhesion: ≥ 2 n/cm
Flexing endurance: > 50.000
Flame resistance: IMO RES A652
Cleaning: microfibre cloth & cold water only

HIGH-TECH SPECIAL EDITION

High-Tech

The High-Tech special edition combines Jetclass' most emblematic products with high technology.

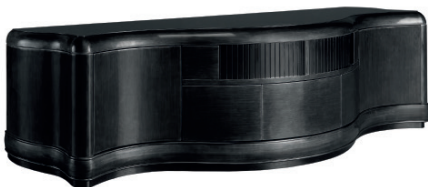
Android TV, Bose sound system, Xbox, mini-bar and digital safe box are part of the diverse options that can be included in some of our pieces. Touch screens and a security system are also functionalities that can be added to the furnishings.

JNY905 . New York automated desk



The New York High-Tech desk has a 27 inches iMac, only visible through a sliding system, when the automated top is activated. The side door can be customised with a mini-bar or a safe box. It is also equipped with an uninterruptible power supply (UPS) hardware for safety reasons.

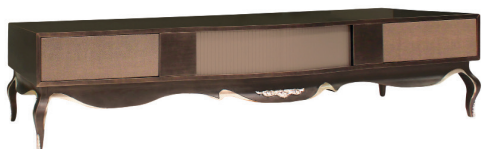
JCP906 . Capri II automated TV Stand



The Capri II High-Tech TV stand has an automated sliding door system operated by a remote control. It has a storage area to keep the TV box, the remote control or a DVD. This TV stand comprises three drawers, two doors and a cables gateway.

HIGH-TECH SPECIAL EDITION

JDN906 . Divine automated TV Stand



The Divine High-Tech TV stand has an automated sliding door system operated by a remote control. It has storage area to keep the TV box, the remote control or a DVD. This TV stand comprises two drawers and a cables gateway.

LIGHTING

TECHNICAL CHARACTERISTICS

Jetclass' lighting pieces are produced in stainless steel, brass and wood.

The metallic finishes are available in gun metal, gold, silver, copper, champagne and smoke colours. These materials can have a polished or brushed finishing.

For the lampshades the standard colours are white, beige, silver, green and taupe.

We use a variety of materials for the details, such as glass, pearls, marble and crystal.

COLOURS & METALS

METALLIC ELEMENTS

Polished Stainless Steel Finishes



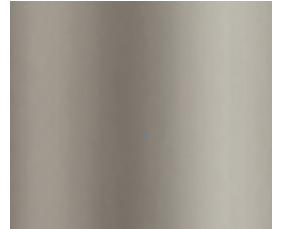
Gold



Champagne



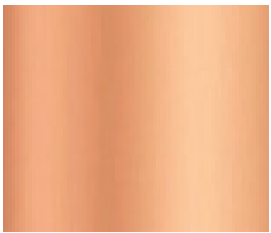
Gun Metal



Smoke



Raw

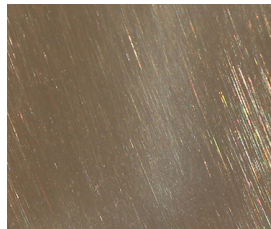


Copper

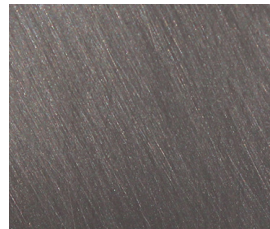
Brushed Stainless Steel Finishes



Gold



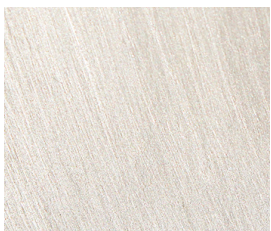
Champagne



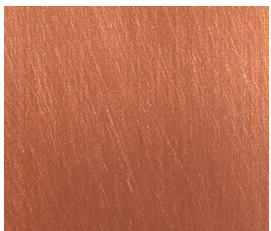
Gun Metal



Smoke



Raw

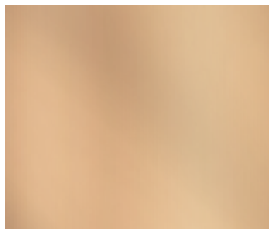


Copper

COLOURS & TEXTURES

GLASS ELEMENTS | FABRICS

Glass Colour Options



Bronze



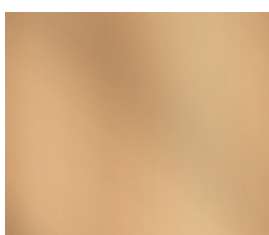
Grey



Transparent



Pure



Frosted Bronze



Frosted Grey



Frosted Transparent

Lampshade Fabrics



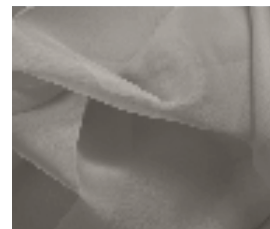
LG1 White



LG2 Beige



LG3 Silver



LG4 Taupe



LF1 White



LF2 Beige



LF3 Light Green

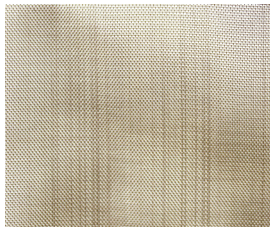


LF4 Forest Green

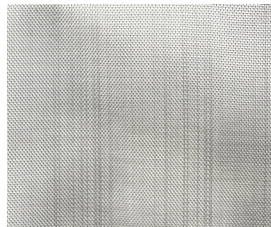
COLOURS & TEXTURES

FABRICS | MARBLES | DECORATIVE ELEMENTS

Metallic Lampshade



LPB Gold

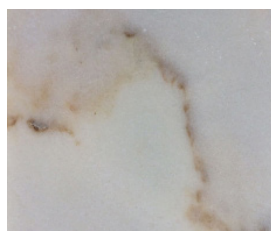


LPS Silver

Marble Options



Nero Marquina



Blanc Nude

Decorative Pearls



PE1 White



PE2 Beige



PE3 Silver



PE4 Black

Crystals



CT1 White