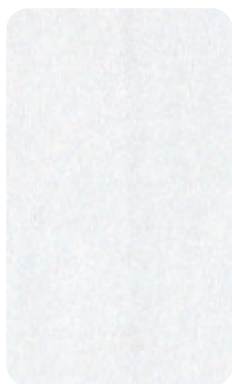


materials

19

—

armet



PP1
bianco
white



PP2
grigio perla
pearl grey



PP3
nero
black



PP4
marrone
brown



PP5
antracite
anthracite



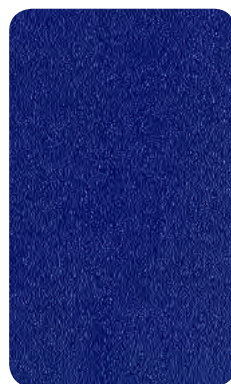
PP6
rosso
red



PP7
arancio
orange



PP8
verde chiaro
light green



PP9
blu
blue



PP11
tortora
dove



PP12
grafite
graphite



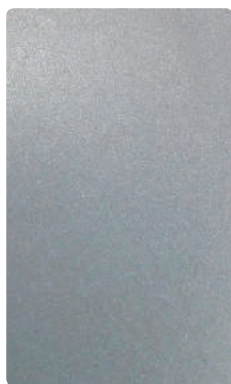
PP13
oliva
olive



PP14
lampone
raspberry



PP15
blu polvere
powder blue



AL2
alluminio satinato
satinated aluminium



GD
oro
gold



OT
ottone
brass



CU
rame
copper



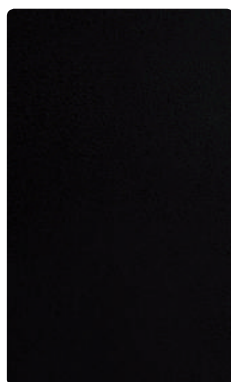
TI
titanio
titanium



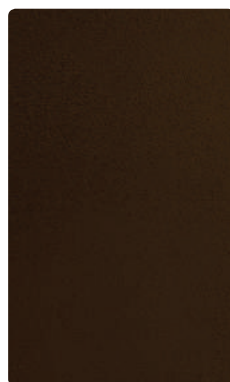
AL1
alluminio gofrato
embossed aluminium



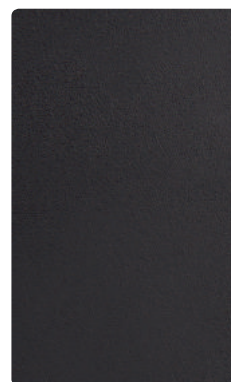
M1
bianco gofrato
embossed white



M2
nero gofrato
embossed black



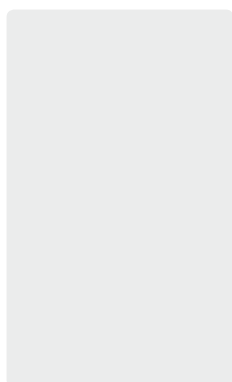
M3
marrone seppia
goffrato
*embossed
sepia brown*



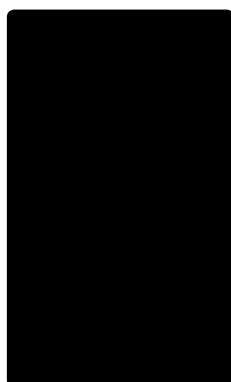
M4
grigio basalto
goffrato
*embossed
basalt grey*



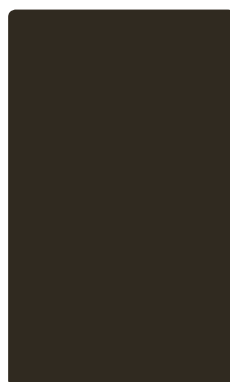
M5
rosso rubino gofrato
embossed ruby red



M6
bianco
white



M7
nero
black



M8
marrone grigiastro
grey brown



M10
rosso fuoco
flame red



T1
faggio naturale
natural beechwood



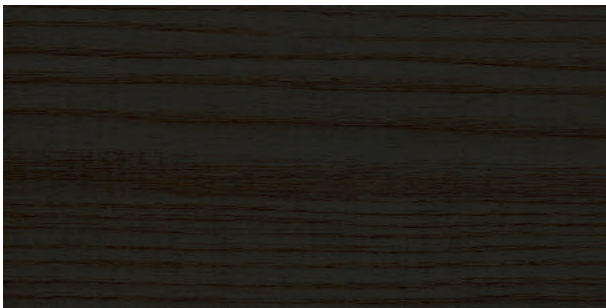
T2
frassino tinto rovere
stained-oak ashwood



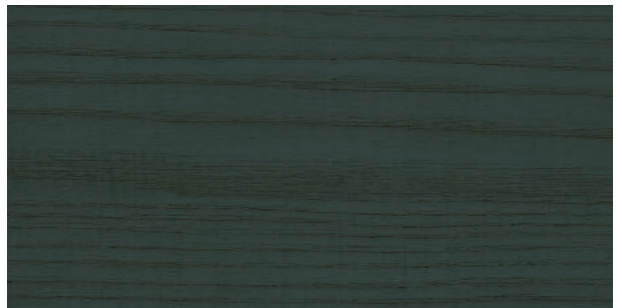
T3
frassino naturale
natural ashwood



T4
frassino anilina bianco
white aniline ashwood



T5
frassino anilina nero
black aniline ashwood



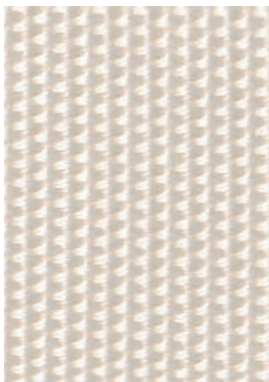
T6
frassino anilina grigio
grey aniline ashwood



T7
frassino anilina rosso
red aniline ashwood



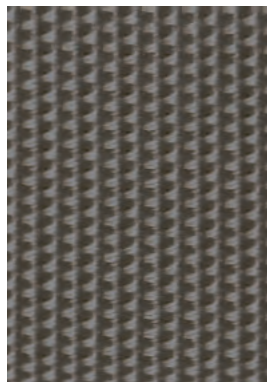
T8
frassino anilina wengé
wenge aniline ashwood



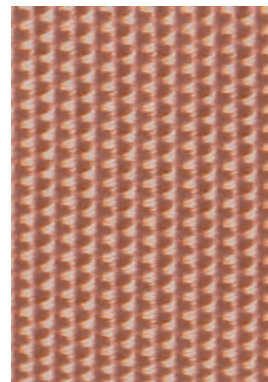
BLT1
bianco
white



BLT2
nero
black



BLT3
argento
silver



BLT4
salmone
salmon

CORDA PVC
PVC ROPE



Ø 4 mm



STR1 trasparente / *transparent*

STR2 bianco / *white*

STR3 nero / *black*

STR4 marrone / *brown*

STR5 rosso / *red*

STR6 verde / *green*

STR7 celeste / *light blue*

CORDA POLIESTERE
POLYESTER ROPE



Ø 8 mm



H 8 mm / H 10 mm



RO1 bianco / *white*

RO2 nero / *black*

RO3 argento / *silver*

RO4 marrone / *brown*

RO5 canapa / *hemp*

RO6 beige / *beige*

RO7 verde militare / *military green*



973

DIVINA MD

Tipologia: lana
Composizione: 100% lana vergine
Larghezza: 150 cm
Peso: 820 g/mtl
Design: Finn Sködt
Pulizia e manutenzione: contattare il fornitore al sito www.kvadrat.dk.

Type: wool
Composition: 100% new wool
Width: 150 cm
Weight: 820 g/lm
Design: Finn Sködt
Cleaning and maintenance: contact the supplier through website www.kvadrat.dk.



203



343



353



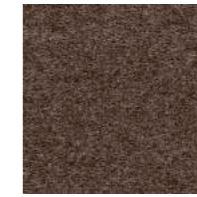
193



413



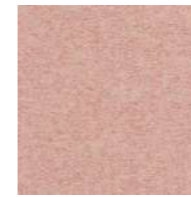
453



363



433



613



633



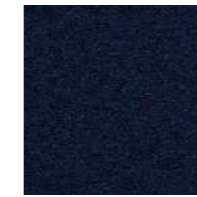
653



673



683



783



773



753



743



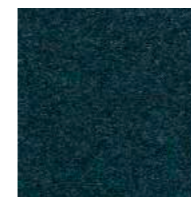
733



713



813



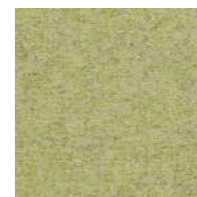
873



843



943



913

Resistenza al fuoco / Flame resistance

EN 1021-1/2
 BS 5852 (2-5)
 CA TB 117-2013
 DIN 4102 B2
 Önorm B1/Q1
 NFD 60 013
 UNI 9175 1IM
 AS.NZS 1530.3
 IMO FTP Code 2010 (8)

Solidità alla luce / Light fastness

UNI EN ISO 105-B02 (5-7)

Resistenza all'abrasione / Abrasion resistance

UNI EN ISO 12947 (≈ 45.000 Martindale)

Solidità allo sfregamento / Fastness to rubbing

UNI EN ISO 105-X12 (a secco/dry rubbing 4-5)
 UNI EN ISO 105-X12 (a umido/wet rubbing 4)

Pilling

UNI EN ISO 12945 (3)

Note

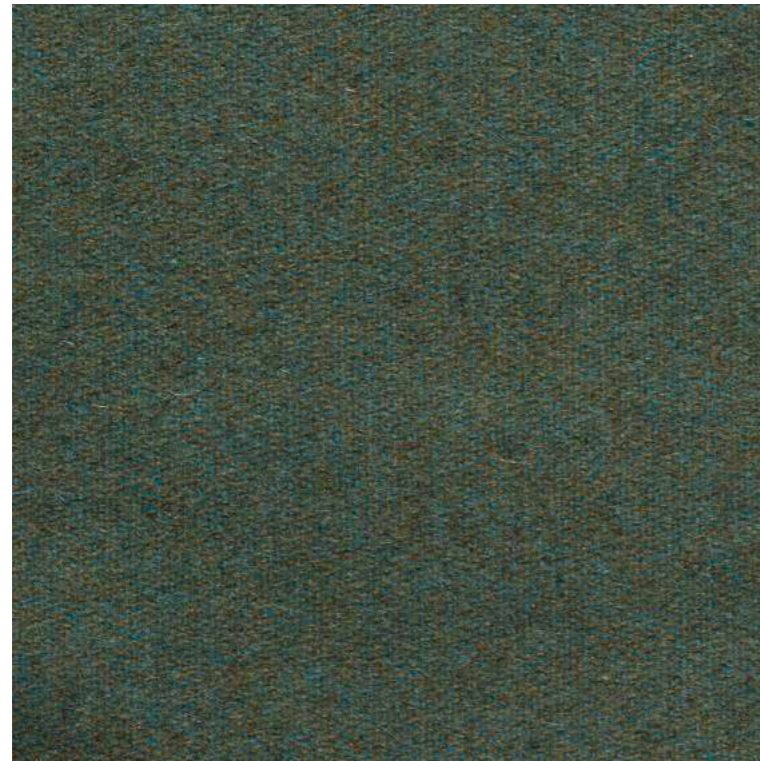
Leggere differenze di colore fra una partita e l'altra sono da considerarsi normali

Notes

Light colour differences between lots must be considered normal

kvadrat

For further information
kvadrat.dk

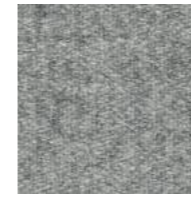


042

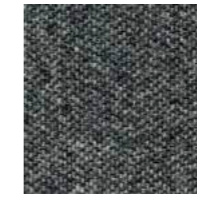
ST. MORITZ

Tipologia: lana
Composizione: 80% lana, 20% poliammide
Larghezza: 140 cm
Peso: 440 g/mtl
Pulizia e manutenzione: contattare il fornitore al sito www.linterno.it.

Type: wool
Composition: 80% wool, 20% polyamide
Width: 140 cm
Weight: 440 g/lm
Cleaning and maintenance: contact the supplier through website www.linterno.it.



155



159



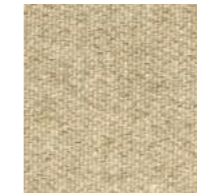
162



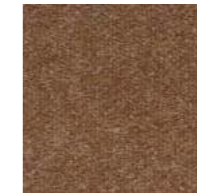
163



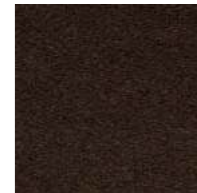
001



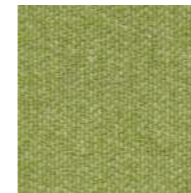
005



025



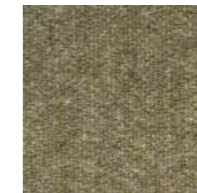
081



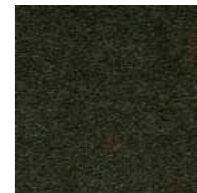
047



034



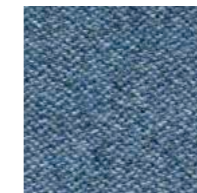
038



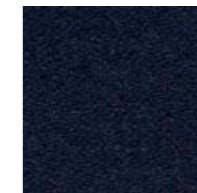
099



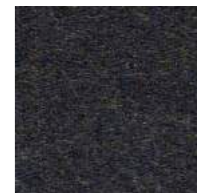
130



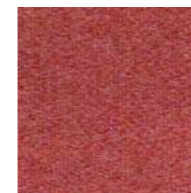
142



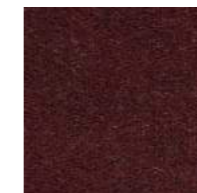
148



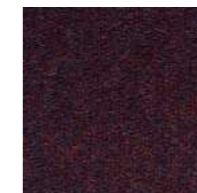
091



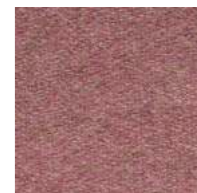
108



075



078



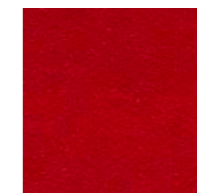
122



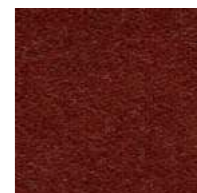
059



064



069



067

Resistenza al fuoco / Flame resistance
 EN 1021-1/2
 IMO A.652(16)

Solidità alla luce / Light fastness
 UNI EN ISO 105-B02 (5)

Resistenza all'abrasione / Abrasion resistance
 UNI EN ISO 12947 12kpa (≈ 80.000 Martindale)

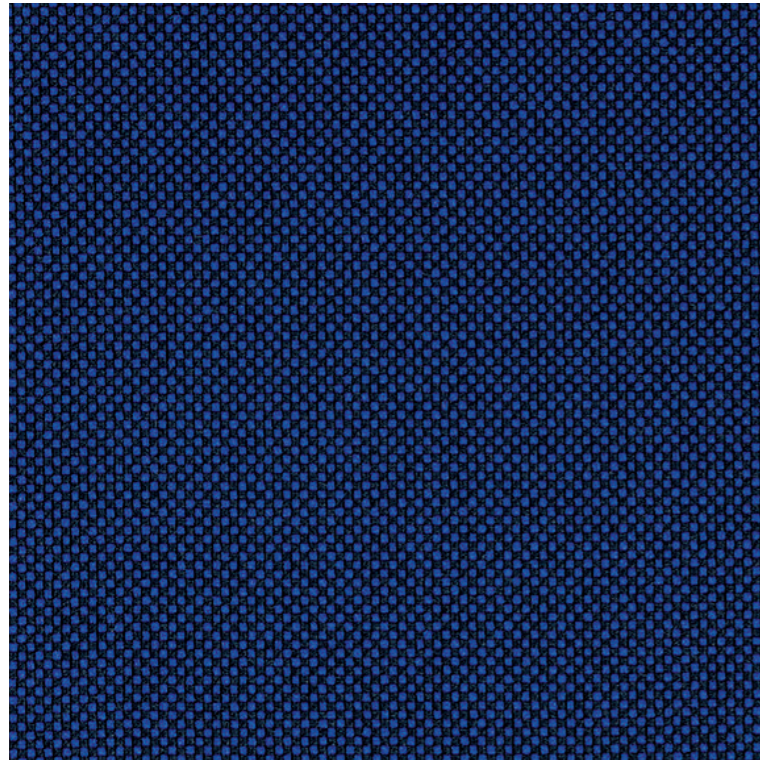
Pilling
 UNI EN ISO 1512434 0 (3)

Note
 Leggere differenze di colore fra una partita e l'altra sono da considerarsi normali

Notes
 Light colour differences between lots must be considered normal

L'INTERNO
 DI FRANCO FABBRI

For further information
linterno.it



66136

GO CHECK

Tipologia: trevira
Composizione: 100% poliestere (Trevira cs)
Larghezza: 140 cm
Peso: 435 g/mtl
Design: Inger Mosholt Nielsen
Pulizia e manutenzione: contattare il fornitore al sito www.gabriel.dk.

Type: trevira
Composition: 100% polyester (Trevira cs)
Width: 140 cm
Weight: 435 g/lm
Design: Inger Mosholt Nielsen
Cleaning and maintenance: contact the supplier through website www.gabriel.dk.

Resistenza al fuoco / Flame resistance

EN 1021-1/2
 BS 5852 (0,1-5)
 CA TB 117-2013
 BS 7176
 DIN 4102 B1
 DIN EN 13501-1 B-s1,d0
 NFP 92-503/504/505 M1
 ÖNORM B1/Q1
 UNI 9175 1IM
 FAR/JAR 25.853 (a) (i) (ii)

Solidità alla luce / Light fastness

UNI EN ISO 105-B02 (5-8)

Resistenza all'abrasione / Abrasion resistance

UNI EN ISO 12947-2 (≈ 80.000 Martindale)

Solidità allo sfregamento / Fastness to rubbing

UNI EN ISO 105-X12 (a secco/dry rubbing 4-5)
 UNI EN ISO 105-X12 (a umido/wet rubbing 4-5)

Pilling

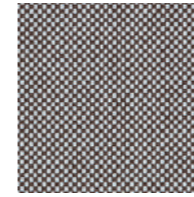
UNI EN ISO 12945-2 (5)

Note

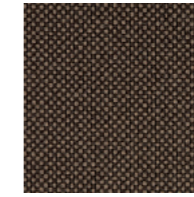
Leggere differenze di colore fra una partita e l'altra sono da considerarsi normali

Notes

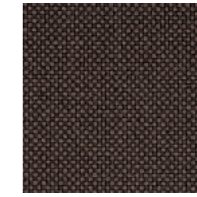
Light colour differences between lots must be considered normal



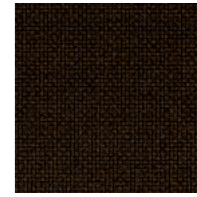
60079



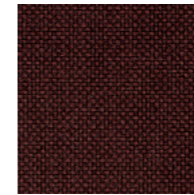
61139



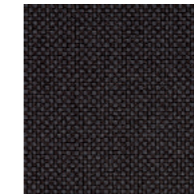
61140



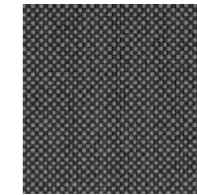
61141



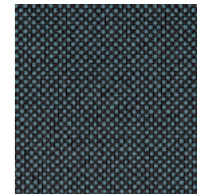
61145



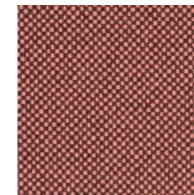
60084



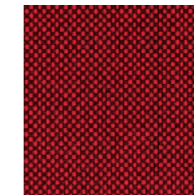
60083



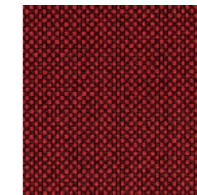
60081



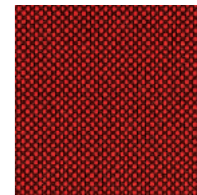
64183



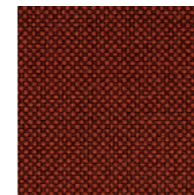
64175



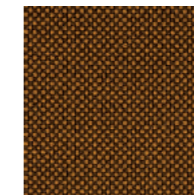
64172



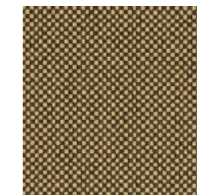
64171



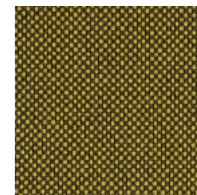
61144



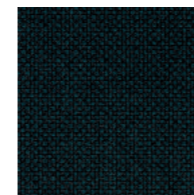
61143



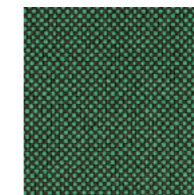
61142



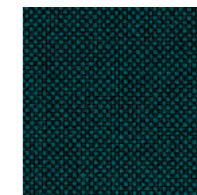
62071



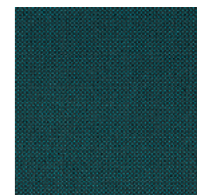
68149



68169



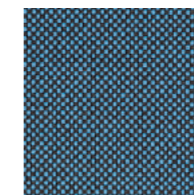
68152



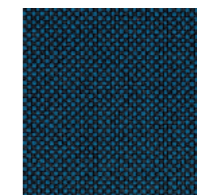
67071



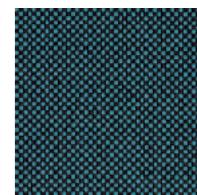
66140



66135



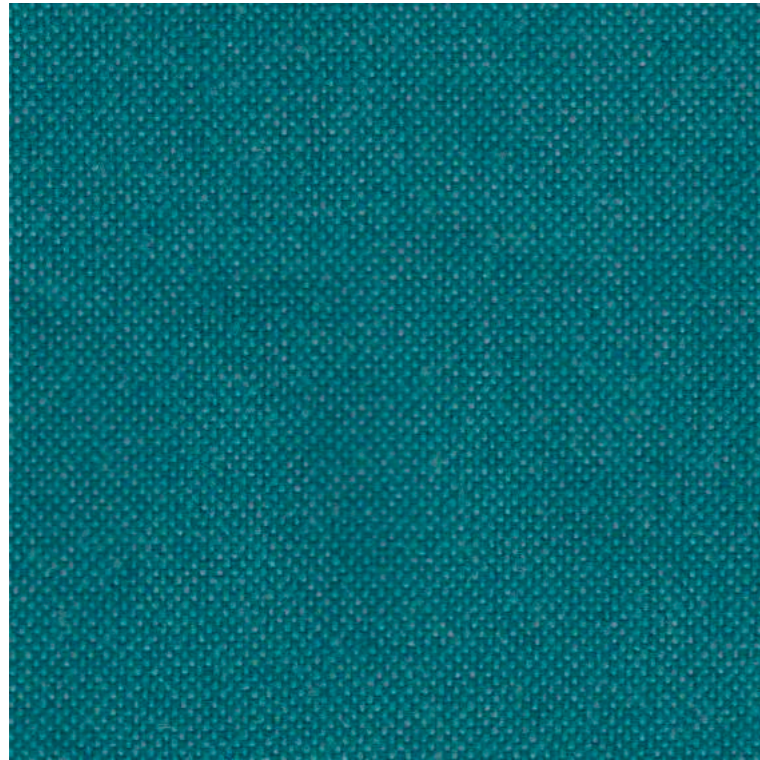
66139



67070

Gabriel

For further information
gabriel.dk



9609

JET

Tipologia: trevira
Composizione: 100% poliestere (Trevira cs)
Larghezza: 140 cm
Peso: 365 g/mtl
Pulizia e manutenzione: contattare il fornitore al sito www.fidivi.com.

Type: trevira
Composition: 100% polyester (Trevira cs)
Width: 140 cm
Weight: 365 g/lm
Cleaning and maintenance: contact the supplier through website www.fidivi.com.

Resistenza al fuoco / Flame resistance

EN 1021-1/2
 BS 5852-2 (5)
 BS 7176
 DIN 4102 B1
 NFP 92501-7 M1
 NFD 60 013
 UNI 9174 - UNI 845 C1
 IMO A.652(16)
 IMO B (5)-(7)-(8)

Solidità alla luce / Light fastness

UNI EN ISO 105-B02 (6)

Resistenza all'abrasione / Abrasion resistance

UNI EN ISO 12947-2 (≈ 65.000 Martindale)

Solidità allo sfregamento / Fastness to rubbing

UNI EN ISO 105-X12 (a secco/dry rubbing 4-5)
 UNI EN ISO 105-X12 (a umido/wet rubbing 4-5)

Pilling

UNI EN ISO 12945-2 (5)

Note

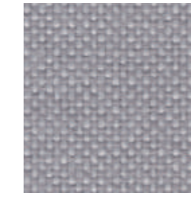
Leggere differenze di colore fra una partita e l'altra sono da considerarsi normali

Notes

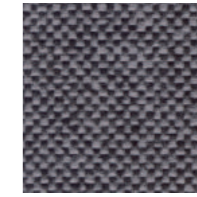
Light colour differences between lots must be considered normal



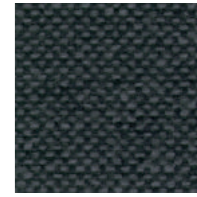
8001



9803



9294



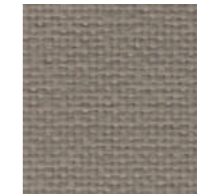
9806



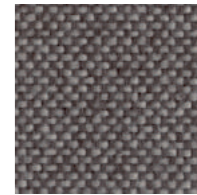
1001



9110



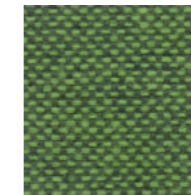
2024



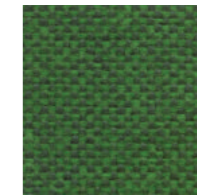
9109



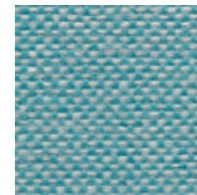
9701



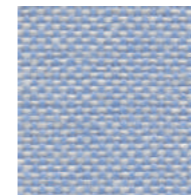
9702



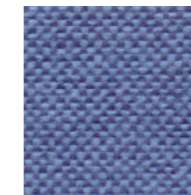
9704



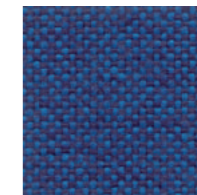
9610



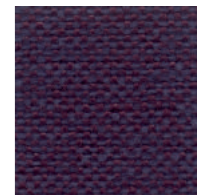
9600



9601



9603



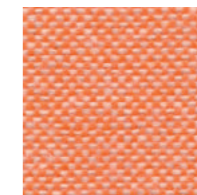
9607



9302



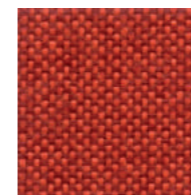
9304



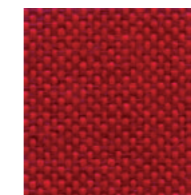
9301



9403



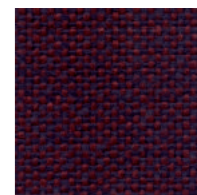
9402



9401



4018



9501



64121

OBIKA LEATHER+

Tipologia: similpelle
Composizione: 66% poliuretano, 24% poliestere, 10% cotone
Larghezza: 140 cm
Peso: 1000 g/mtl
Design: Inger Mosholt Nielsen / Helene Jensen
Pulizia e manutenzione: contattare il fornitore al sito www.gabriel.dk.

Type: Faux leather
Composition: 66% polyurethane, 24% polyester, 10% cotton
Width: 140 cm
Weight: 1000 g/lm
Design: Inger Mosholt Nielsen / Helene Jensen
Cleaning and maintenance: contact the supplier through website www.gabriel.dk.



60000



61177



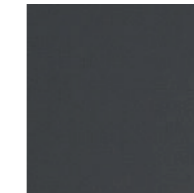
61178



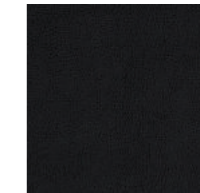
61179



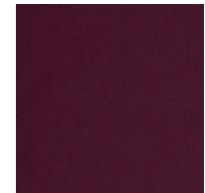
60160



60161



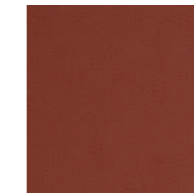
60999



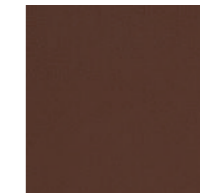
64122



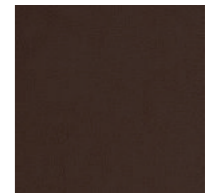
61181



63059



63060



61182

Resistenza al fuoco / Flame resistance

EN 1021-1/2
 BS 5852 (O,1-5)
 CA TB 117-2013
 BS 7176
 DIN 4102 B1
 NFP 92-503/504/505 M1
 ÖNORM B1/Q1
 UNI 9175 1IM
 FAR/JAR 25.853 (a) (i) (ii)

Solidità alla luce / Light fastness

UNI EN ISO 105-B02 (5-7)

Resistenza all'abrasione / Abrasion resistance

UNI EN ISO 12947-2 (≈ 250.000 Martindale)

Solidità allo sfregamento / Fastness to rubbing

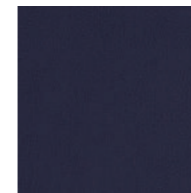
UNI EN ISO 105-X12 (a secco/dry rubbing 4-5)
 UNI EN ISO 105-X12 (a umido/wet rubbing 4-5)

Note

Leggere differenze di colore fra una partita e l'altra sono da considerarsi normali

Notes

Light colour differences between lots must be considered normal



66138



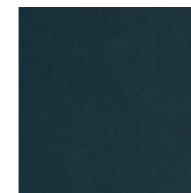
67050



67049



66139



67051



68105

Gabriel[®]

For further information
gabriel.dk



111

MAGNUM

Tipologia: similpelle
Composizione: 88% polivinil cloruro, 7% poliestere, 4% cotone, 1% poliuretano
Larghezza: 140 cm
Peso: 715 g/m²
Pulizia e manutenzione: contattare il fornitore al sito www.abitex.eu.

Type: faux leather
Composition: 88% polyvinyl chloride, 7% polyester, 4% cotton, 1% polyurethane
Width: 140 cm
Weight: 715 g/m²
Cleaning and maintenance: contact the supplier through website www.abitex.eu.

Resistenza al fuoco / Flame resistance

EN 1021-1/2
 BS 5852 (O-1)
 CA TB 117-2013
 BS 5852 IS 11 (5)
 DIN 4102-1 B1
 NFP 503 M1
 FTP CODE 307(88):10 Annex 7-8
 UNI 9175 1IM

Solidità alla luce / Light fastness

UNI EN ISO 105-B02 (≥7)

Resistenza all'abrasione / Abrasion resistance

BS EN ISO 5470-2 (≈ 200.000 Martindale)

Solidità allo sfregamento / Fastness to rubbing

UNI EN ISO 105-X12 (a secco/dry rubbing ≥5)
 UNI EN ISO 105-X12 (a umido/wet rubbing ≥5)

Note

Leggere differenze di colore fra una partita e l'altra sono da considerarsi normali

Notes

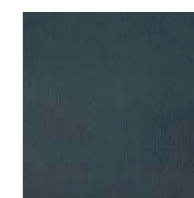
Light colour differences between lots must be considered normal



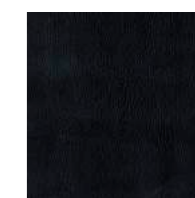
105



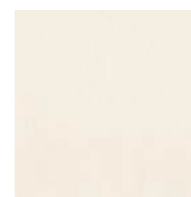
603



602



200



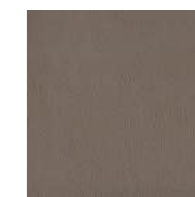
100



103



400



406



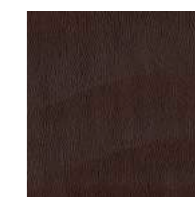
503



407



404



405



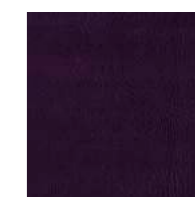
310



304



302



313



001



706



701



700



500



804



803



002

ABITEX

For further information
abitex.eu

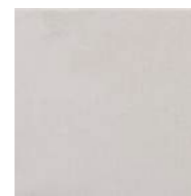


0530

NO_FIRE

Tipologia: velluto
Composizione: 100% trevira
Larghezza: 140 cm
Peso: 540/580 g/mtl
Pulizia e manutenzione: contattare il fornitore al sito www.lopificio.it.

Type: velvet
Composition: 100% trevira
Width: 140 cm
Weight: 540/580 g/lm
Cleaning and maintenance: contact the supplier through website www.lopificio.it.



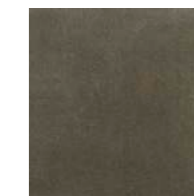
0010



0312



0257



0247



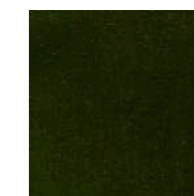
0219



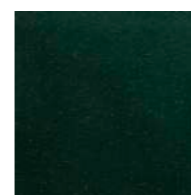
0236



0147



0618



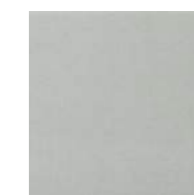
0628



0246



0900



0310

Resistenza al fuoco / Flame resistance

UNI 9177 (Classe 1)
 BS 5852 (Crib 5)

Solidità alla luce / Light fastness

UNI EN ISO 150 B02/04 (6/7)

Resistenza all'abrasione / Abrasion resistance

UNI EN ISO 12947-2 /00 (≈ 140.000 Martindale)

Pilling

UNI EN ISO 12945-2/02 (5)

Note

Leggere differenze di colore fra una partita e l'altra sono da considerarsi normali

Notes

Light colour differences between lots must be considered normal



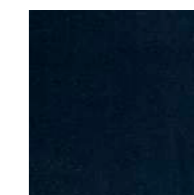
0719



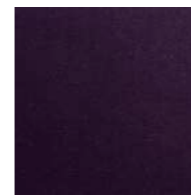
0720



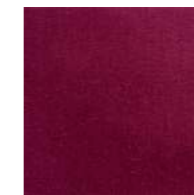
0715



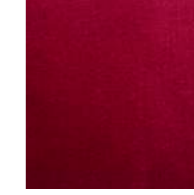
0837



0574



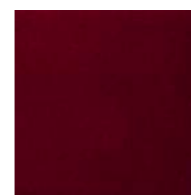
0505



0527



0513



0425



For further information
lopificio.it



149

SUPERB

Tipologia: velluto
Composizione: 100% poliestere
Larghezza: 140 cm
Peso: 400 g/m²
Pulizia e manutenzione: contattare il fornitore al sito www.flukso.it.

Type: velvet
Composition: 100% polyester
Width: 140 cm
Weight: 400 g/m²
Cleaning and maintenance: contact the supplier through website www.flukso.it.

Resistenza al fuoco / Flame resistance

EN 1021-1
 EN 1021-2
 UNI 9175 - 1IM
 UNI 9177 - CLASSE 1
 BS 5852 - CRIB 5
 NF 92.503 - M1
 DIN 4102 - B1

Solidità alla luce / Light fastness

UNI EN ISO 105-B02 (≥5)

Resistenza all'abrasione / Abrasion resistance

UNI EN ISO 12947-2 (≈ 60.000 Martindale)

Pilling

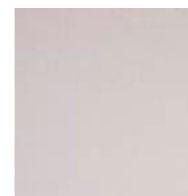
UNI EN ISO 12945-2 (5)

Note

Leggere differenze di colore fra una partita e l'altra sono da considerarsi normali

Notes

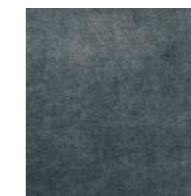
Light colour differences between lots must be considered normal



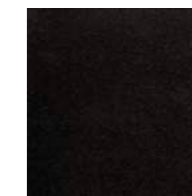
153



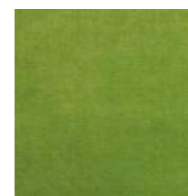
152



151



147



137



136



134



131



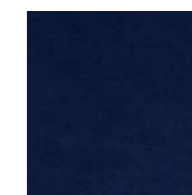
130



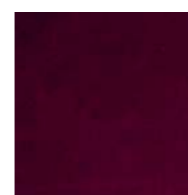
126



127



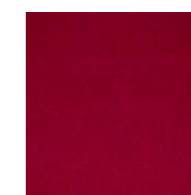
128



123



119



118



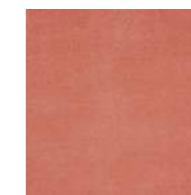
117



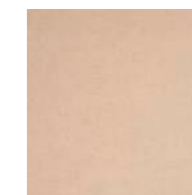
112



110



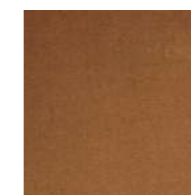
114



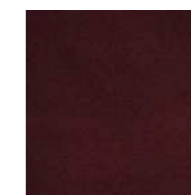
104



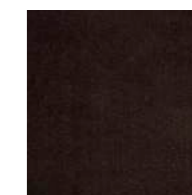
103



143



145



148





275

LEATHER**Tipologia:** pelle**Composizione:** 100% pelle

Pulizia e manutenzione: per pulire macchie o gocce di liquido asciugare delicatamente l'area interessata con un panno inumidito d'acqua tiepida. Fare attenzione a non bagnare eccessivamente l'area, altrimenti tamponare ulteriormente con un panno asciutto. Consigliamo di non strofinare mai la superficie troppo energicamente.

Type: leather**Composition:** 100% leather

Cleaning and maintenance: to clean stains or drops of liquid, gently wipe the affected area gently with a cloth dampened with warm water. Be careful not to wet the area excessively, otherwise dab with a dry cloth. We recommend never rubbing the surface too hard.

Resistenza al fuoco / Flame resistance
BS 5852 Match & Cigarette test
BS EN 1021-1-2 Match & Cigarette test

Solidità alla luce / Light fastness
UNI EN ISO 105 B02 >=5

Solidità allo sfregamento / Fastness to rubbing
UNI EN ISO 11640 (a secco/dry rubbing >=4)
UNI EN ISO 11640 (a umido/wet rubbing >=3/4)

Note

Leggere differenze di colore fra una partita e l'altra sono da considerarsi normali

Notes

Light colour differences between lots must be considered normal



301



286



200



292



398



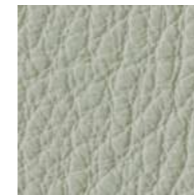
216



217



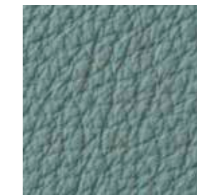
298



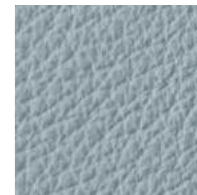
254



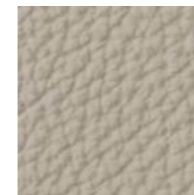
256



265



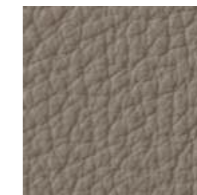
272



209



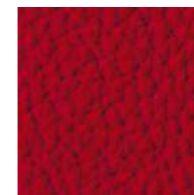
210



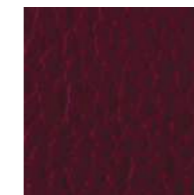
206



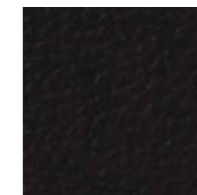
204



248



242



207

Nella stampa su carta la tonalità dei colori non può essere riprodotta fedelmente. Arrmet Srl si riserva la facoltà di apportare modifiche in qualsiasi momento e senza preavviso.

During printing process, colour tones may not be reproduced faithfully. Arrmet Srl reserves the right to make changes at any time and without any previous notice.

arrmet

arrmet srl
via alessandro volta 8
33044 manzano (ud) italy
ph. +39 0432 937065
fax +39 0432 740102
PI/CF: IT 00452180300
mail@arrmet.it
www.arrmet.it

