



Stella del Mobile

ITALIA

Tessuti e pelli / Fabrics and leathers / Ткани и кожа



FROZEN
CH2928/076
CAT.B



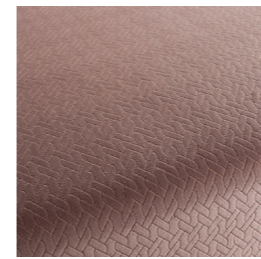
LONGI
9-2259-072
CAT.B



LAVAREDO
Z119 col.007
CAT.A



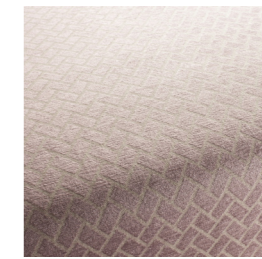
MISTRAL
G139 col.902
CAT.B



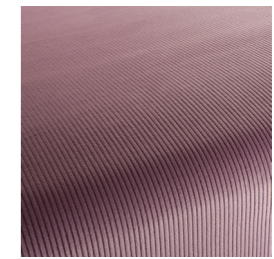
SWEET KISS
CH2918/069
CAT.B



SWEET LOVIN
CH2919/163
CAT.B



LAUNCESTON
9-2262-080
CAT.B



CORD
1-3126-060
CAT.C



DOPPIO
CA1331/075
CAT.A



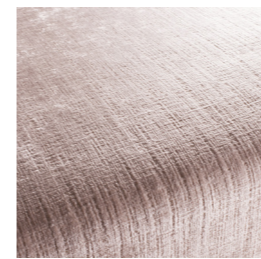
FROZEN SECRETS
CH2926/070
CAT.A



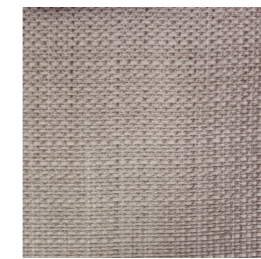
JAMES VOL.2
1-6366-071
CAT.B



PROSPECT PARK
9-7748-070
CAT.A



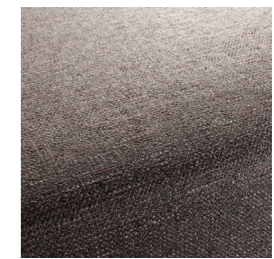
PASTEL POETRY
CH2890/060
CAT.A



SCILIAR
Z128 col.035
CAT.A



MAGENTA
G142 col.17
CAT.C



CAMPBELL
9-2263-080
CAT.B



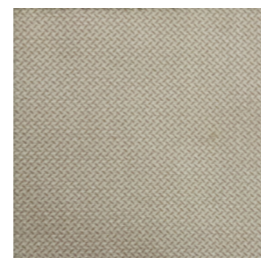
PALAZZO VELVET
CA1175/070
CAT.A



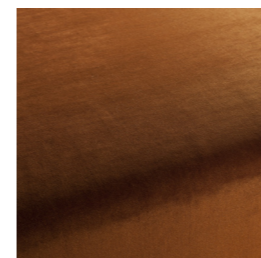
GRIGNETTA
Z116 col.025
CAT.A



OBEY
CA1369/020
CAT.C



ANTELAO
Z104 col.025
CAT.A



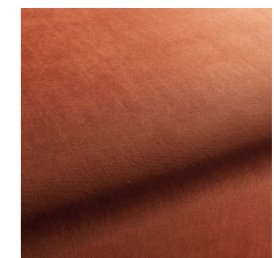
DYKER HEIGHTS
1-3124-061
CAT.B



CADMAN PLAZA
9-7745-060
CAT.C



STATEN ISLAND
9-2266-060
CAT.A



BO
CH2885/067
CAT.A



DORIAN
1-1310-072
CAT.B



TEVERONE
Z132 col.057
CAT.A



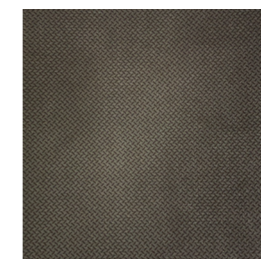
MONTREAL
9-7783-071
CAT.A



CORD
1-3126-075
CAT.C



FROZEN SECRETS
CH2926/061
CAT.A



ANTELAO
Z104 col.057
CAT.A



PROSPECT PARK
9-7748-060
CAT.A



PASTEL POETRY
CH2890/023
CAT.A



LONGI
9-2259-074
CAT.B



GRIGNETTA
Z116 col.007
CAT.A



BILBAO
9-7782-071
CAT.C



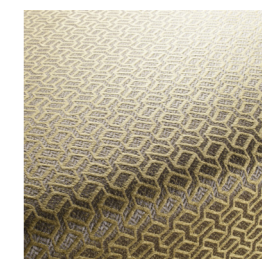
DOPPIO
CA1331/021
CAT.A



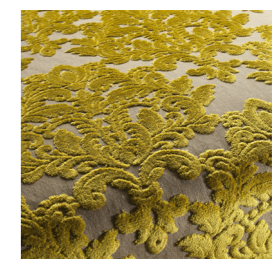
FROZEN SECRETS
CH2926/030
CAT.A



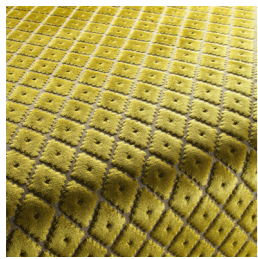
KING
CH2882/030
CAT.B



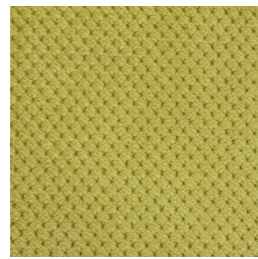
LONGI
9-2259-040
CAT.B



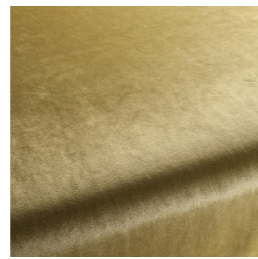
KING HENRY
CH2884/030
CAT.B



KINGSLEY
CH2880/030
CAT.B



GRIGNETTA
Z116 col.068
CAT.A



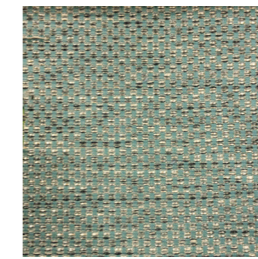
PALAZZO VELVET
CA1175/030
CAT.A



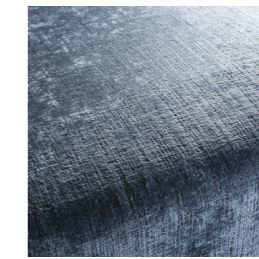
DOPPIO
CA1331/037
CAT.A



DOPPIO
CA1331/082
CAT.A



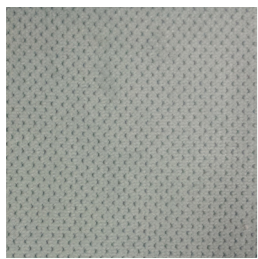
HAIKU
72797 col.9620
CAT.C



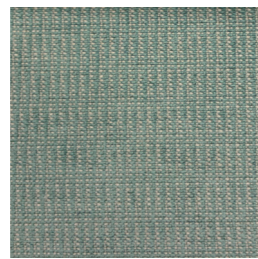
PASTEL POETRY
CH2890/051
CAT.A



KING HENRY
CH2884/050
CAT.B



GRIGNETTA
Z116 col.008
CAT.A



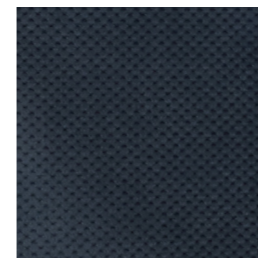
HARRYS
72796 col.9710
CAT.C



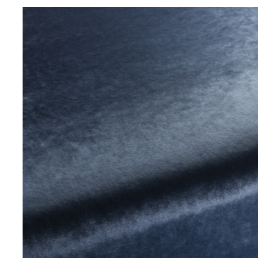
MONTREAL
9-7783-030
CAT.A



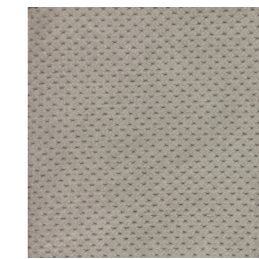
DOPPIO
CA1331/080
CAT.A



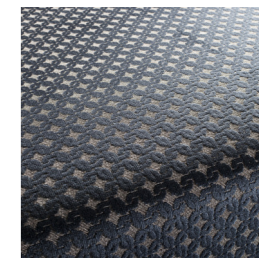
GRIGNETTA
Z116 col.095
CAT.A



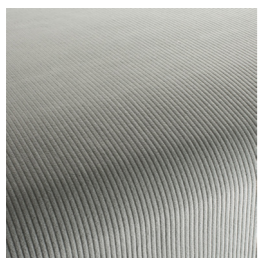
PALAZZO VELVET
CA1175/051
CAT.A



GRIGNETTA
Z116 col.031
CAT.A



OBEY
CA1369/050
CAT.C



CORD
1-3126-030
CAT.C



ANTELAO
Z104 col.031
CAT.A



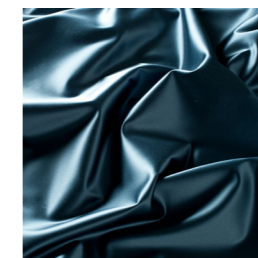
FROZEN SECRETS
CH2926/080
CAT.A



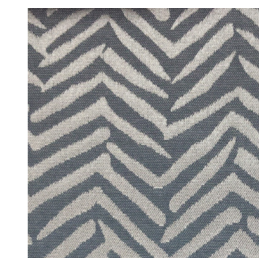
FROZEN
CH2928/083
CAT.B



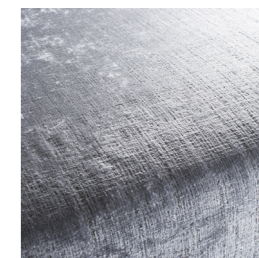
VELLUTO DI COTONE
CA1410/054
CAT.B



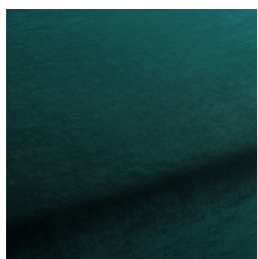
RHETT
1-6706-051
CAT.A



MONTREAL
9-7783-050
CAT.A



PASTEL POETRY
CH2890/050
CAT.A



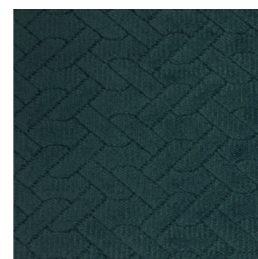
VELLUTO DI COTONE
CA1410/180
CAT.B



KING HENRY
CH2884/080
CAT.B



LISBON
9-2325-030
CAT.A



SWEET KISS
CH2918/181
CAT.B



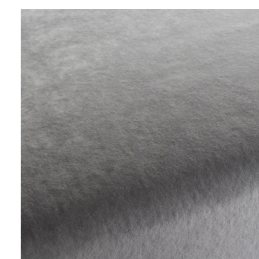
LISBON
9-2325-091
CAT.A



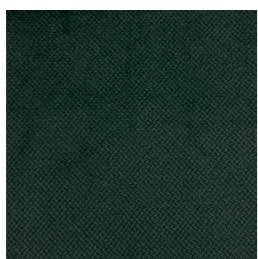
FROZEN
CH2928/096
CAT.B



COPENHAGEN
9-7785-091
CAT.C



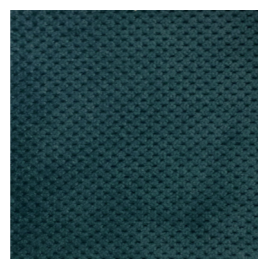
MISTRAL
G139 col.806
CAT.B



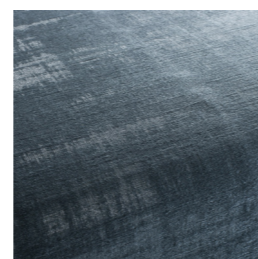
ANTELAO
Z104 col.006
CAT.A



MAGENTA
G142 col.11
CAT.C



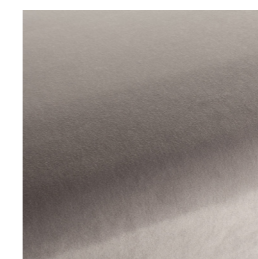
GRIGNETTA
Z116 col.066
CAT.A



NOTTING HILL
9-2282-080
CAT.C



SWEET KISS
CH2918/096
CAT.B



SWEET LOVIN
CH2919/096
CAT.B



BILBAO
9-7782-091
CAT.C



MONTREAL
9-7783-091
CAT.A